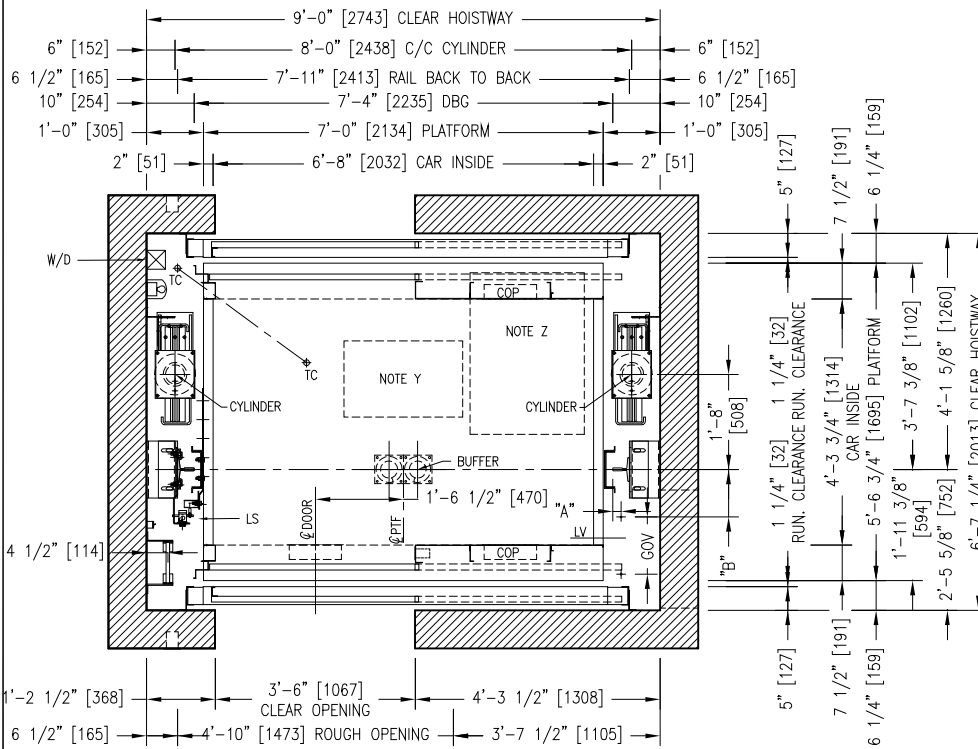


HOISTWAY PLAN VIEW



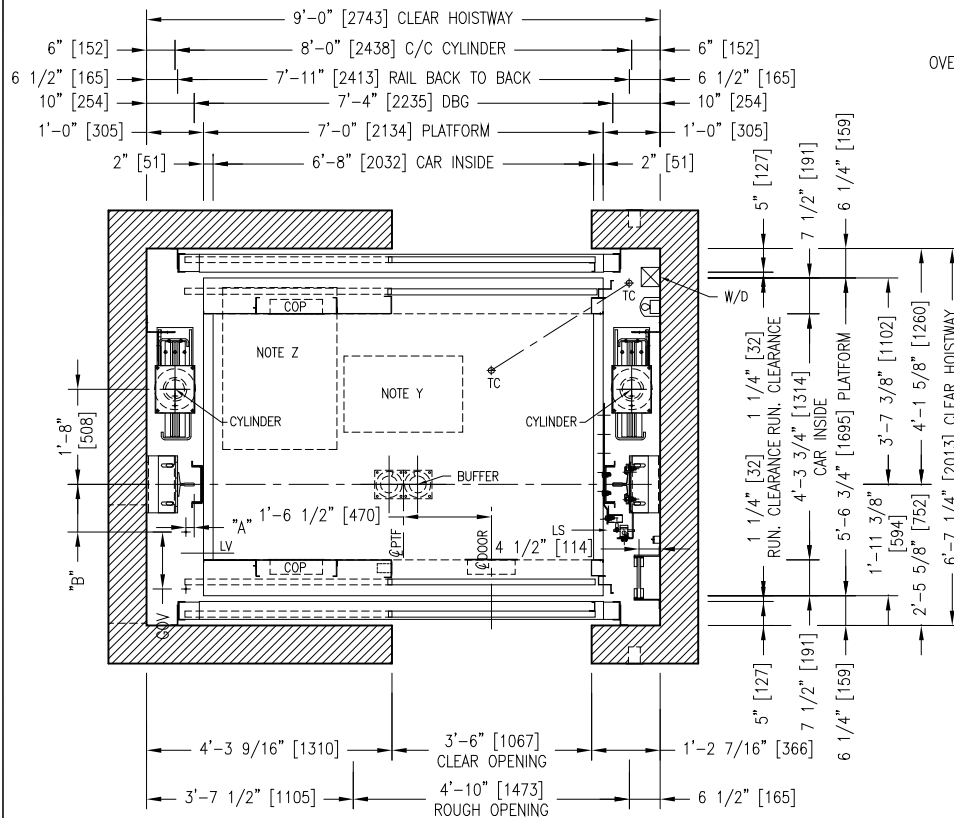
LEFT HAND

NOTE Y: EMERGENCY EXIT 25" x 16" [635 x 406]
 NOTE Z: REFUGE AREA 34" x 24" [864 x 609]

NOTE: _____

PIT: _____

OVERHEAD: _____



RIGHT HAND

| | | | |
|----------------------------------------------------------------------------------------------------------------|--------------|--------------|---------------|
| REV.: | DATE: | DESCRIPTION: | BY: |
| DRAWING NAME: ELEVATOR LAYOUT PLAN VIEW | | | |
| ELEVATOR(S) NUMBER: | | | |
| DETAILS: TWIN JACK ROPE 2500 LBS [1150Kg] KIT LIFT PACKAGE LS-Y2K FRONT AND REAR OPENING / SSP 42" x 84" | | | |
| PROJECT NAME: | | | |
| LOCATION: | | | |
| LE GROUPE MANUFACTURER D'ASCENSEURS GLOBAL TARDIF ELEVATOR MANUFACTURING GROUP | | | |
| DRAWN BY: | VERIFIED BY: | DATE: | SCALE: N.T.S. |
| REF.: | DRAWING #: | SHEET: | REV: |