

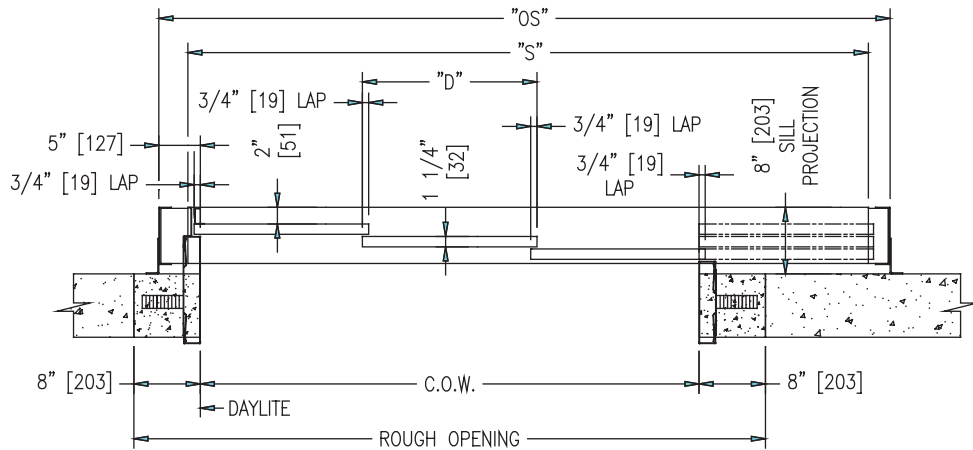
Three-Speed Opening doors

- Conventional (none integral) - without hangers, tracks & closers. - sold separately.
Any size from 30" (762 mm) up to 110" (2794 mm) by 120" (3048 mm) high.

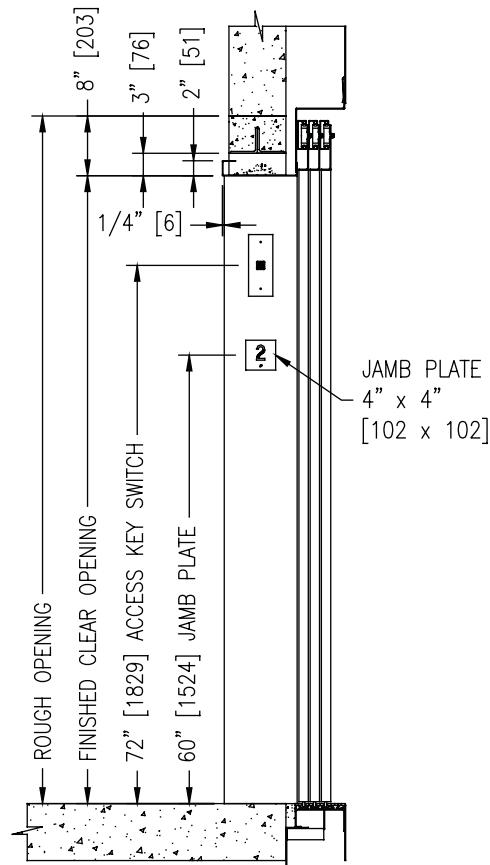
C.O.W : Clear Opening Width
 D : Door width = C.O.W. ÷ 3 + 1" (25) **
 S : Sill length = (C.O.W. x 1 1/3) + 3" (76 mm)
 OS : Outside strut to strut = (C.O.W. x 1 1/3) + 9 1/2" (241 mm) ***

** To use "D" formula, C.O.W. ≥ 42"
 *** You can only use the OS formula for
 spring arm closer. For all other closer types or when
 C.O.W. ≥ 69", OS formula is to be confirmed.
 Please contact us for feasibility of a smaller "OS" dimension

Typical
Plan
View



Typical
Elevation
View



Three-Speed Center Opening Doors

Groupe manufacturier d'ascenseurs



Elevator Manufacturing Group