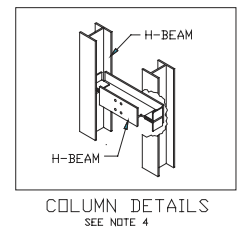


| Capacity lbs. (kg) | Pit Depth ³ | Overhead (OH ^{3,6}) |
|--------------------|------------------------|-------------------------------|
| 8000 (3600) | 5'-0" (1525) | 15'-0" 4570 |
| 10000 (4500) | 5'-0" (1525) | |
| 12000 (5450) | 5'-6" (1675) | |
| 15000 (6800) | 5'-6" (1675) | |



- ① Regular Bi-Parting Door.
- ② For Extended Sill or Pass Type, add 1,75" [44,5] to "HD" or "HDR" for each door .
- ③ Designed for 8'-0" [2440] high cab & entrances.
For 9'-0" [2745] high Cab & entrances, Overhead + 1'-0" [305], Pit + 0'-6" [152]
For 10'-0" [3050] high Cab & entrances, Overhead + 2'-0" [610], Pit + 1'-0" [305]
- ④ Columns are to be extended from pit bottom to overhead beam supports. Where adequate brick or concrete walls are used, columns supports are not required. It is an understatement that sizes of structural columns and framing members are approximate. Accurate data will have to be provided by owner when exact loads, car sizes, floor heights etc., are available. All structural columns, ties connections are to be provided and erected by owner.
- ⑤ For higher speed, contact us.
- ⑥ For speed higher than 100 fpm [0.51] , you must add to the overhead:
Elevator speed 100 FPM [0,51] and under, 0 inch to the overhead
Elevator speed Between 101 FPM [0,52] to 125 FPM [0,64], 2 inches to the overhead
Elevator speed Between 126 FPM [0,64] to 150 FPM [0,75], 4 inches to the overhead
Elevator speed over 150 FPM [0,75], contact us
- ⑦ For C2 Loading Class, contact us

| Speed fpm (m/s) ⁵ | Capacity lbs. (kg) | Hoistway Width | Hoistway Depth | Platform Width | Platform Depth | Size of Opening |
|------------------------------|--------------------|----------------|-----------------|----------------|----------------|-----------------|
| | | HW | HD ² | PW | PD | |
| 25 to 75 (0.18 to 0.38) | 10000 | 134 | 155 | 100 | 144 | 96 |
| | 4500 | 3405 | 3940 | 2540 | 3660 | 2440 |
| | 12000 | 134 | 179 | 100 | 168 | 96 |
| | 5450 | 3405 | 4550 | 2540 | 4270 | 2440 |
| | 15000 | 171.5 | 203 | 124 | 192 | 120 |
| | 6800 | 4360 | 5160 | 3150 | 4880 | 3050 |

Hydraulic "Twin Jack Roped" Freight Elevator CLASS C - Front & Rear Opening - With Columns

Groupe manufacturier d'ascenseurs



Elevator Manufacturing Group