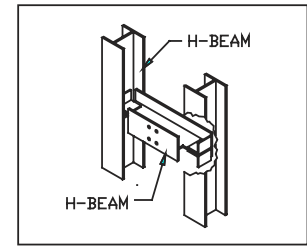


Capacity lbs. (kg)	Pit Depth <sup>3</sup>	Overhead (OH) <sup>3</sup>
8000 (3600)	4'-6" (1370)	15'-0" 4570
10000 (4500)	5'-0" (1525)	
12000 (5450)	5'-0" (1525)	
15000 (6800)	5'-0" (1525)	
18000 (8150)	5'-6" (1675)	
20000 (9050)	5'-6" (1675)	
25000 (11350)	6'-0" (1830)	
30000 (13650)	6'-0" (1830)	



COLUMN DETAILS  
SEE NOTE 4

- ① Regular Bi-Parting Door.
- ② For Extended Sill or Pass Type, add 1,75" [44,5] to "HD" or "HDR" for each door.
- ③ Designed for 8'-0" [2440] high cab & entrances. For 9'-0" [2745] high Cab & entrances, Overhead + 1'-0" [305], Pit + 0'-6" [152]. For 10'-0" [3050] high Cab & entrances, Overhead + 2'-0" [610], Pit + 1'-0" [305]
- ④ Columns are to be extended from pit bottom to overhead beam supports. Where adequate brick or concrete walls are used, columns supports are not required. It is an understatement that sizes of structural columns and framing members are approximate. Accurate data will have to be provided by owner when exact loads, car sizes, floor heights etc., are available. All structural columns, ties connections are to be provided and erected by owner.
- ⑤ For C2 Loading Class, contact us.
- ⑥ For higher speed, contact us.

Speed fpm (m/s) <sup>6</sup>	Capacity lbs. (kg)	Hoistway Width	Hoistway Depth	Platform Width	Platform Depth	Size of Opening
		HW	HD <sup>2</sup>	PW	PD	
25 to 75 (0.18 to 0.38)	10000	134	152	100	144	96
	4500	3405	3860	2540	3660	2440
	12000	134	176	100	168	96
	5450	3405	4470	2540	4270	2440
	15000	171.5	200	124	192	120
	6800	4355	5080	3150	4880	3050
	18000	175.5	224	124	216	120
	8150	4460	5690	3150	5490	3050
	20000	199.5	248	148	240	144
	9050	5070	6300	3760	6100	3660
25000	199.5	248	148	240	144	
11350	5070	6300	3760	6100	3660	
30000	199.5	248	148	240	144	
13650	5070	6300	3760	6100	3660	

## Hydraulic "Holed" Freight Elevator CLASS C - Front Opening - With Column

Groupe manufacturier d'ascenseurs



Elevator Manufacturing Group