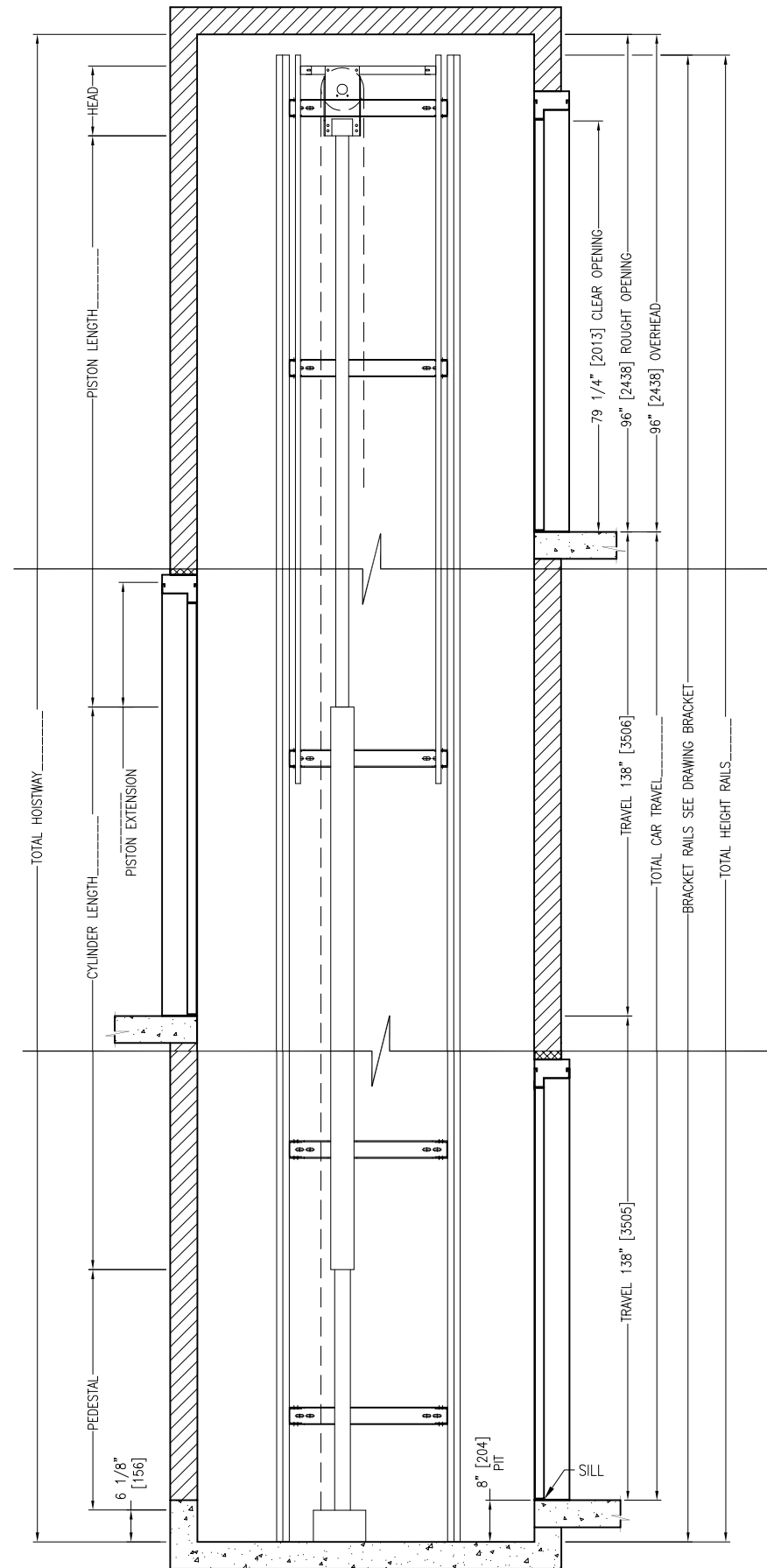


CONTRACT DATA

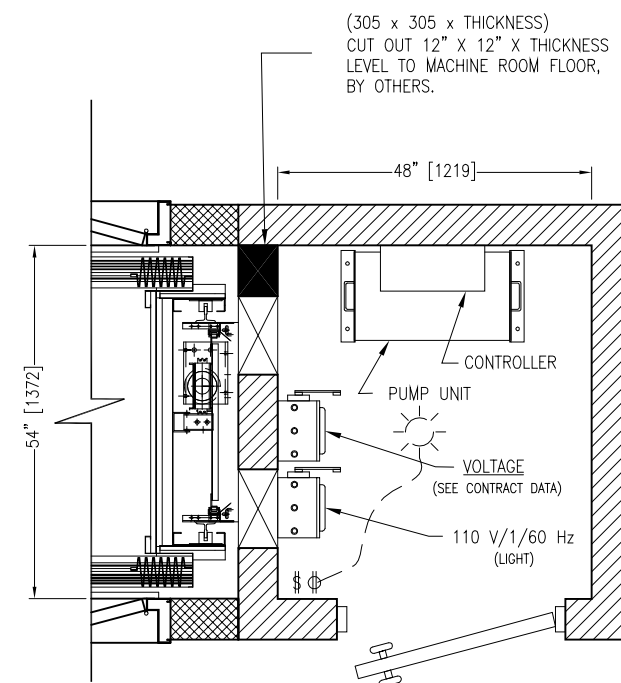
NO. OF ELEVATORS:	1
TYPE	ROPED-HYDRAULIC/HANDICAPPED
RATED LOAD-LBS./WEIGHT CAB	750 LBS/ 650 LBS
SURFACE	15.5 FT ² - 1.44 M ²
PERSONS	2
SPEED	↑ ↓
OPERATION	AUTOMATIC
CONTROLLER	
SELF LEVELLING	AUTOMATIC
LANDINGS/OPENINGS	
HOISTWAY DOORS	MANUAL
VOLTAGE/PHASE/CYCLE	
MOTOR	
PUMP (ALLWEILER)	
VALVE (BLAIN)	
REQUIRED OIL, GALS	16 GAL US - 61L
OIL LINE PIPE	1/2" Ø 100R2
OIL FLOW	G.P.M.
WORKING PRESSURE	PSI
CYLINDER ø/WALL	4 1/2"ø(114mm)/WALL 1/4" (6.35mm)
PISTON ø/WALL	2 3/4"ø(70mm)/WALL 1/4" (6.35mm)
RAILS	8 LBS/FT - 11.9KG/M
GUIDES	NYLON
STEADIER	FIXE
STARTING AMP.	AMP.
FULL LOAD AMP.	AMP.
PULLEY DIAMETER	ø8 1/2" - [ø213mm]
CABLES	2 CABLE 3/8"ø CLASS 7 x 19 AIRCRAFT
BREAKING STRENGTH	14400 LB (6538 KG)/CABLE

NOTE: ALL DIMENSIONS BETWEEN BRACKETS ARE IN MILLIMETERS

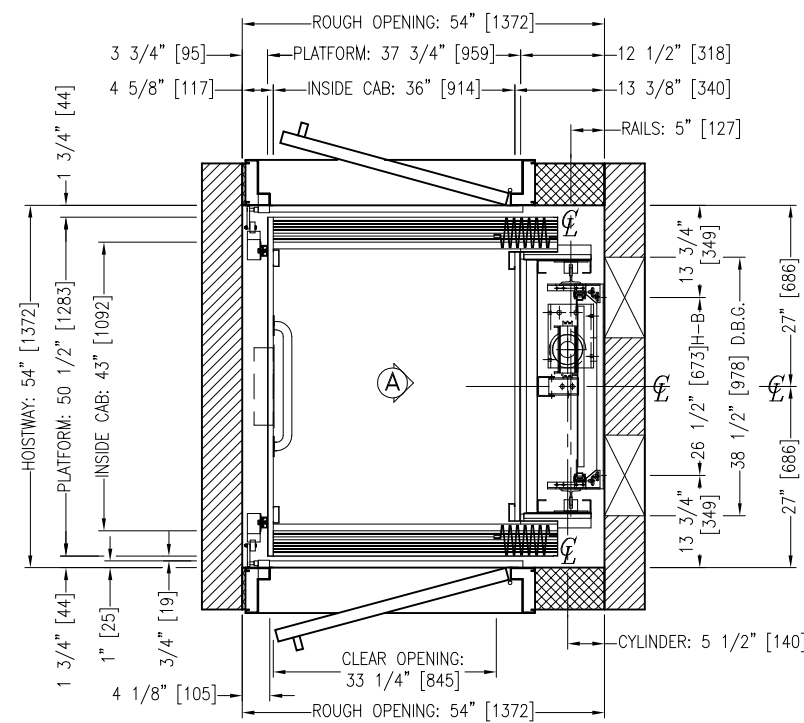
- THIS INSTALLATION IS DRAWN IN ACCORDANCE WITH THE CAN-CSA-B44-00 CODES SECTION 5.3.



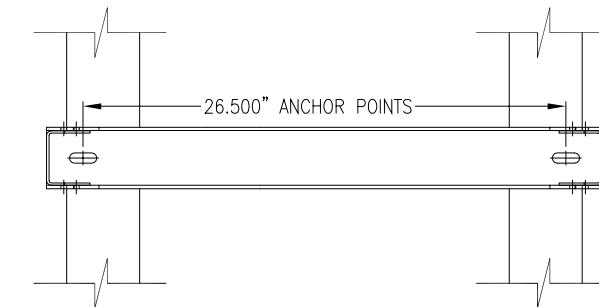
ELEVATION VIEW A



TYPICAL MACHINE ROOM PLAN

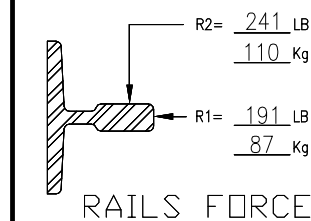


PLAN OF HATCH



RAIL BRACKET DETAIL

CAPACITY: 750 LBS



RAILS FORCES

0	NOV'06		
REV.:	DATE:	DESCRIPTION:	BY:
DRAWING NAME: ELEVATOR LAYOUT			
CAR: GT102R-V06			
DETAIL: SAFETY SAFGT101			
PROJECT NAME:			
LOCATION:			
DRAWN BY:		VERIFIED BY:	DATE:
REF.:		DRAWING #:	SHEET:
		SCALE: N.T.S.	
		GLOBAL TARDIF	
ELEVATOR MANUFACTURING GROUP, INC.			