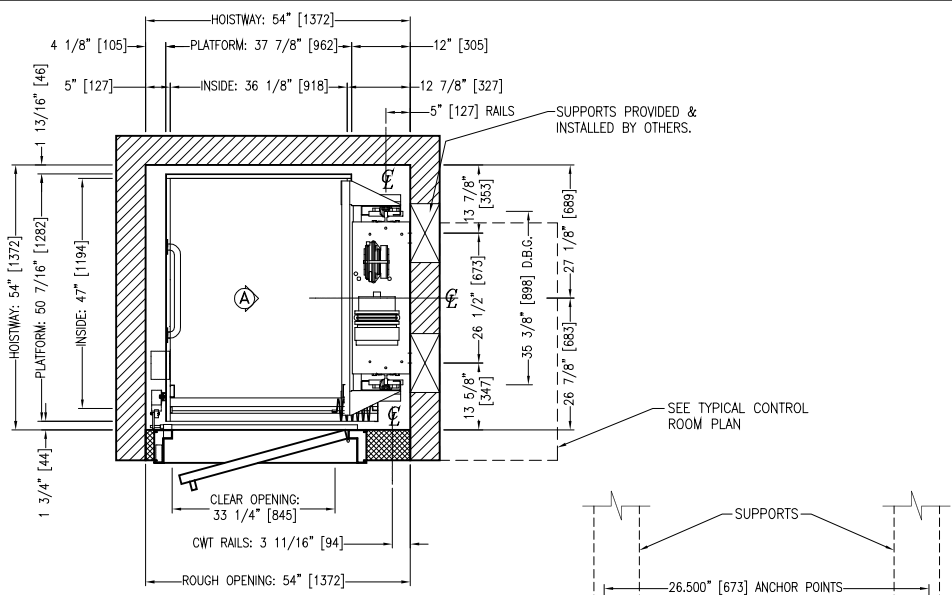
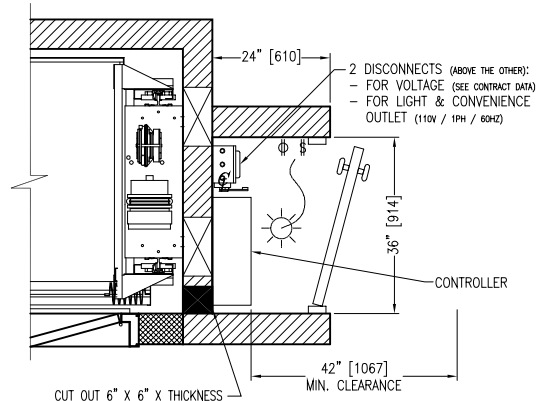


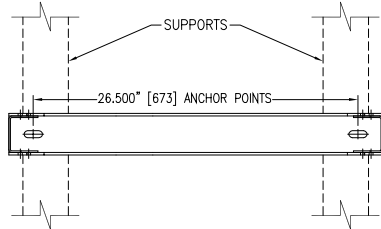
ELEVATION VIEW A



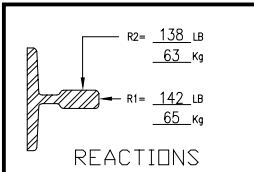
PLAN OF HATCH



TYPICAL CONTROL ROOM PLAN LOCATED AT THE LAST FLOOR



RAIL BRACKET DETAIL



REACTIONS

TECHNICAL DATA

| | |
|-------------------------|-----------------------------|
| ELEVATORS QTY | 1 |
| TYPE | TRACTION GEARLESS 2:1 / HDC |
| RATED LOAD / WEIGHT CAB | 750 LBS / 750 LBS |
| COUNTERWEIGHT | 1 125 LBS |
| SURFACE | 12 FT 2 2 |
| PERSON/S | 2 |
| VOLTAGE | 220/1/60 |
| SPEED | 40 FT/MIN. |
| OPERATION | AUTOMATIC |
| SELF LEVELING | AUTOMATIC |
| LEVELING TYPE | TAPE READER |
| LIMITS SWITCH | OMRON |
| LANDING/OPENING | --- / --- |
| HOISTWAY DOOR | MANUAL |
| CAR RAILS | 5.78 LBS/FT - 7.06 KG/M |
| CWT RAILS | UNISTRUT 1" X 1 5/8" |
| TYPE OF GUIDE | ROLLERS |
| CAB STEADIER | FIXE |
| CONTROLLER | GT-TEKTRONIC SRX 500 |
| CONTROLLER TYPE | MICROPROCESSOR |
| CAR SAFETY TYPE | SAFGT01 |
| CWT SAFETY TYPE | N/A |
| CAR GOVERNOR: | |
| TYPE | PFB R5R TYPE WITH CONTACT |
| CABLE | 61/4" |
| TRIPPING SPEED | 47.2 FT/MIN. - 0.24 M/S |
| CWT GOVERNOR: | |
| TYPE | N/A |
| CABLE | N/A |
| TRIPPING SPEED | N/A |
| CAR SHEAVE DIAMETER | 2" |
| CWT SHEAVE DIAMETER | 2" |
| CABLES | 2 CABLE 3/8"Ø CLASS 8 x 19 |
| BREAKING STRENGTH | 13 570 LBS - 6 169 KG |
| SECURITY FACTOR | 20.68 |

MACHINE DATA

| | |
|---------------------------|--------------|
| MACHINE | GTMR6RS01 |
| MACHINE CAPACITY | 2 200 LBS |
| MACHINE SPEED (RPM) | 38.2 |
| MOTOR DATA (V/PH/Hz) | 220 / 3 / 60 |
| MOTOR STARTING | AMP. |
| MOTOR FULL LOAD | 6.5 AMP. |
| MOTOR HP | 3/4 HP |
| DRIVE SHEAVE | 98" |
| EMERGENCY BRAKE | ON MACHINE |
| ROPE PITCH | 0.625" |
| TRANSFORMER BTU/H | N/A |
| CONTROL SPACE TOTAL BTU/H | BTU/H |
| HOISTWAY TOTAL BTU/H | BTU/H |

NOTES:- ALL DIMENSIONS BETWEEN BRACKETS [] ARE IN MILLIMETERS
 - THIS INSTALLATION IS DRAWN IN ACCORDANCE WITH THE CAN-CSA-B44-00 CODES SECTION 5.3.

| | | | |
|---------------|--|--------------|---------------|
| 0 | DATE: | DESCRIPTION: | BY: |
| DRAWING NAME: | ELEVATOR LAYOUT ENTRANCE FRONT | | |
| ASC: | | | |
| DETAILS: | GT SOFTRIDE SF100R WITH SAFETY SAFGT01 | | |
| PROJECT NAME: | | | |
| ADDRESS: | | | |
| DRAWN BY: RP | CHECK BY: | DATE: | SCALE: N.T.S. |
| REF.: | DRAWING #: | SHEET: 1/1 | REV: 0 |



ELEVATOR MANUFACTURING GROUP INC.