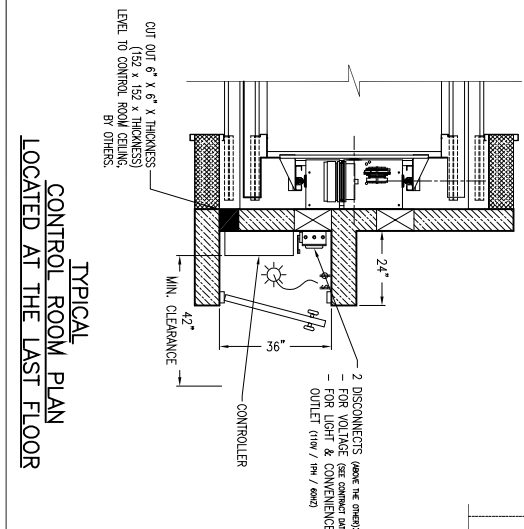
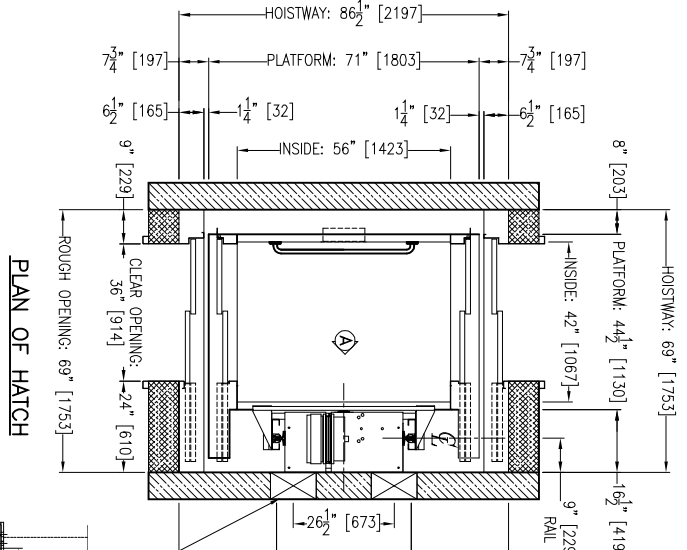


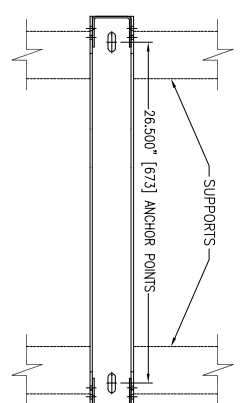
ELEVATION VIEW (A)



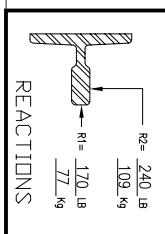
TYPICAL CONTROL ROOM PLAN LOCATED AT THE LAST FLOOR



PLAN OF HATCH



RAIL BRACKET DETAIL



REACTIONS

TECHNICAL DATA

ELEVATORS QTY	1
TYPE	TRACTION GEARLESS 2:1 / HOC
RATED LOAD / WEIGHT CAB	750 LBS / 1 700 LBS
COUNTERWEIGHT	2 075 LBS
SURFACE	16.33 FT ²
PERSON/S	2
VOLTAGE	220 / 1 / 60
SPEED	30 FT/MIN.
OPERATION	CONSTANT PRESSURE
SELF LEVELING	AUTOMATIC
LEVELING TYPE	TAPE READER
LIMIT SWITCH	OMRON
LANDING/OPENING	AUTOMATIC
CAR RAILS	8 LBS/FT - 11.9 KG/M
CAR RAILS	RAILS/FT - X 1.57/8
CAR STRENDER	FIVE
CONTROLLER	GT-TELETRONIC SRX 500
CONTROLLER TYPE	MICROPROCESSOR
CAR SAFETY TYPE	SAF6101
CAR GOVERNOR	N/A
TYPE	FTB RSR TYPE WITH CONTACT
CABLE	61/7"
TRIPPING SPEED	47.2 FT/MIN. - 0.24 M/S
CMT GOVERNOR	N/A
TYPE	N/A
CABLE	N/A
TRIPPING SPEED	N/A
CAR SHEAVE DIAMETER	612"
CMT SHEAVE DIAMETER	612"
CABLES	3 CABLES 3/8" CLASS 8 X 19
BREAKING STRENGTH	13 570 LBS - 6 169 KG
SECURITY FACTOR	14.8

MACHINE DATA

MACHINE	GM101-14-30
MACHINE CAPACITY	6 600 LBS
MACHINE SPEED (RPM)	20.4
MOTOR DATA (V/PH/Hz)	220 / 3 / 60
MOTOR STARTING	18 AMP
MOTOR FULL LOAD	12 AMP
MOTOR HP	3/4 HP
DRIVE SHEAVE	611 1/4"
EMERGENCY BRAKE	ON MACHINE
ROPE PITCH	0.625"
TRANSFORMER BTU/H	N/A
CONTROL SPARE TOTAL BTU/H	BTU/H
HOISTWAY TOTAL BTU/H	BTU/H

NOTES:- ALL DIMENSIONS BETWEEN BRACKETS ARE IN MILLIMETERS
 - THIS INSTALLATION IS DRAWN IN ACCORDANCE WITH THE CAN-USA-8355 S1/02 CODES, INCLUDING THE UPDATES OF MARCH 2002 AND OCTOBER 2003.

PROJECT NAME: **GT SOFTRIDE 500-C WITH SAFETY SARGT01**

ADDRESS: **GLOBAL TARDIF**

DESIGNER: **GLOBAL TARDIF**

SCALE: **N.T.S.**

SHEET: **1/1**