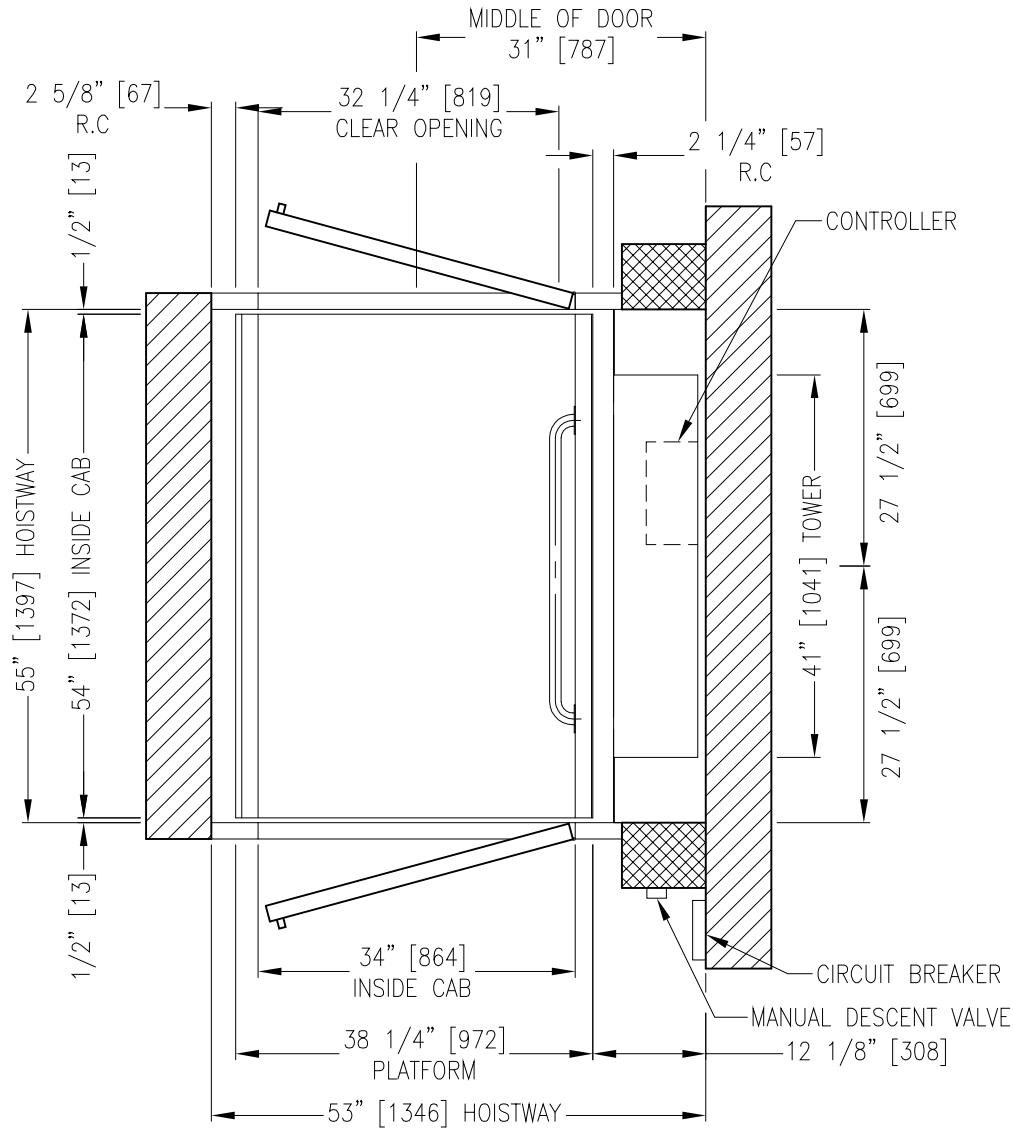


MODEL GT SMARTLIFT-S



HOISTWAY LAYOUT

STANDARD PIT DEPTH: 3" (75mm)
MIN. REQUIRED OVERHEAD: 78 3/4" (2000mm)

0	NOV.07'06		
REV.:	DATE:	DESCRIPTION:	BY:
DRAWING NAME: ELEVATOR LAYOUT			
ELEVATOR(S) NUMBER:			
DETAILS: GT SMARTLIFT FRONT-REAR (102)			
PROJECT NAME:			
LOCATION:			
		LE GROUPE MANUFACTURIER D'ASCENSEURS GLOBAL TARDIF <small>ELEVATOR MANUFACTURING GROUP</small>	
DRAWN BY:	VERIFIED BY:	DATE:	SCALE: N.T.S.
REF.:	DRAWING #:	SHEET:	REV: 0