



Global Tardif Elevator Manufacturing Group

Manufacturing Elevator Solutions

Traction

Planning Guide

MRL

Traction

Hydraulic

Freight

Cabs

Entrance

Accessibility



Groupe manufacturier d'ascenseurs



Elevator Manufacturing Group

Global Tardif Elevator Manufacturing Group Inc.



Le groupe manufacturier d'ascenseurs Global Tardif inc.

Our Company

Our History

Founded in 1984, Global Tardif has been supplying a full line of quality products and components for the last 22 years. We manufacture, engineer and design the complete product line of hydraulic and traction elevators, either standard or none models, including the manufacturing of elevator cabs, entrances, plungers & cylinders, power units. We also manufacture the complete line of vertical wheelchair lifts, residential elevators, public and residential dumbwaiters.

Our commitment to quality and customer service began with Jean-Guy Tardif the founder of our company. He started as a machinist with Alpin Otis (Québec City), and later on he became the production manager.

When Otis closed the factory, Jean-Guy Tardif began his own company. His son François Tardif, joined the company in 1989 as an engineer in charge of product development and quality

system. Father and son teamed together and became dedicated to their customers as well as to top quality products. With passion, it has been very prospering since.

In September 2003, further expansion took place at St-Augustin-de-Desmaures, Quebec, Canada. A new manufacturing complex of over 165 000 sq.ft was constructed as the phase I of the project.

Our head office is located in St-Augustin-de-Desmaures, Quebec, Canada. We currently employ over 250 people in three (3) different plants with more than 267 000 sq.ft of manufacturing facilities.

Our Peoples

As a highly skilled and experienced manufacturer, Global Tardif offers consumers a variety of public or private products to meet all your elevator needs. We are dedicated in creating quality products that offer lasting style, value and splendor.

Our Contract Logistics Centre (CLC) counts (88) office employees, (14) engineers, (21) AutoCAD draftsmen and many others with university degrees and graduate technician for a portfolio of many innovative product lines.





Le groupe manufacturier d'ascenseurs Global Tardif inc.

TRACTION ELEVATOR

GEARED OVERHEAD PASSENGER TYPE

FRONT / FRONT & REAR OPENING										
Capacity (lbs)[Kg]	2100	953	2500	1134	3000	1361	3500	1588	4000	1814
Speed (fpm)[m/s]	150 to 500	0.75 to 2.5	150 to 500	0.75 to 2.5	150 to 500	0.75 to 2.5	150 to 500	0.75 to 2.5	150 to 500	0.75 to 2.5
Elev. Dim. (in)[mm]										
PW 6'-0"	1829	7'-0"	2134	7'-0"	2134	7'-0"	2134	8'-0"	2438	
PD 5'-1"	1549	5'-1"	1549	5'-7"	1702	6'-3"	1905	6'-3"	1905	
PDR 5'-6 3/4"	1695	5'-6 3/4"	1695	6'-0 3/4"	1848	6'-8 3/4"	2051	6'-8 3/4"	2051	
CO 3'-0"	914	3'-6"	1067	3'-6"	1067	3'-6"	1067	4'-0"	1219	
Entrance Type	1 Speed ²	1 Speed ²	1 Speed or CO ²	1 Speed or CO ²	1 Speed or CO ²	1 Speed or CO ²	1 Speed or CO ³	1 Speed or CO ³	CO ³	CO ³
Hoistway (in)[mm]										
HW 7'-4"	2235	8'-4"	2540	8'-4"	2540	8'-4"	2540	9'-4"	2845	
HWR ⁵ 8'-4"	2540	9'-4"	2845	9'-4"	2845	9'-4"	2845	10'-4"	3150	
DHW ^{5,6} 15'-0"	4572	17'-0"	5182	17'-0"	5182	17'-0"	5182	19'-0"	5791	
THW ^{5,6} 22'-8"	6909	25'-8"	7823	25'-8"	7823	25'-8"	7823	28'-8"	8738	
HD ⁵ 6'-7 1/4"	2013	6'-7 1/4"	2013	7'-1 1/4"	2165	7'-9 1/4"	2369	7'-9 1/4"	2369	
HDR 6'-7 1/4"	2013	6'-7 1/4"	2013	7'-1 1/4"	2165	7'-9 1/4"	2369	7'-9 1/4"	2369	
M.R. Height (in)[mm]										
(Def. sheave in OH) 7'-6"	2286	7'-6"	2286	7'-6"	2286	7'-6"	2286	7'-6"	2286	
(Def. Sheave in MR) 8'-6"	2591	8'-6"	2591	8'-6"	2591	8'-6"	2591	8'-6"	2591	
Min. OH (fpm)[m/s]*										
(Def. sheave in MR)										
150-200 [0.75-1.0] 15'-0"	4572	15'-0"	4572	15'-0"	4572	15'-0"	4572	15'-0"	4572	
250-350 [1.25-1.75] 16'-0"	4877	16'-0"	4877	16'-0"	4877	16'-0"	4877	16'-0"	4877	
400 [2.0] 17'-0"	5182	17'-0"	5182	17'-0"	5182	17'-0"	5182	17'-0"	5182	
450 [2.25] 18'-0"	5486	18'-0"	5486	18'-0"	5486	18'-0"	5486	18'-0"	5486	
500 [2.5] 18'-0"	5486	18'-0"	5486	18'-0"	5486	18'-0"	5486	18'-0"	5486	
Min. OH (fpm)[m/s]*										
(Def. sheave in OH)										
150-200 [0.75-1.0] 16'-6"	5029	16'-6"	5029	16'-6"	5029	16'-6"	5029	16'-6"	5029	
250-350 [1.25-1.75] 17'-6"	5334	17'-6"	5334	17'-6"	5334	17'-6"	5334	17'-6"	5334	
400 [2.0] 18'-6"	5639	18'-6"	5639	18'-6"	5639	18'-6"	5639	18'-6"	5639	
450 [2.25] 19'-6"	5944	19'-6"	5944	19'-6"	5944	19'-6"	5944	19'-6"	5944	
500 [2.5] 19'-6"	5944	19'-6"	5944	19'-6"	5944	19'-6"	5944	19'-6"	5944	
Max. Travel (fpm)[m/s]										
150-200 [0.75-1.0] 150'-0"	45720	150'-0"	45720	150'-0"	45720	150'-0"	45720	150'-0"	45720	
250-350 [1.25-1.75] 200'-0"	60960	200'-0"	60960	200'-0"	60960	200'-0"	60960	200'-0"	60960	
400 [2.0] 350'-0"	106680	350'-0"	106680	350'-0"	106680	350'-0"	106680	350'-0"	106680	
450 [2.25] 425'-0"	129540	425'-0"	129540	425'-0"	129540	425'-0"	129540	425'-0"	129540	
500 [2.5] 450'-0"	137160	450'-0"	137160	450'-0"	137160	450'-0"	137160	450'-0"	137160	
For higher travel, please contact us.										
Pit Depth P (fpm)[m/s]										
150-350 [0.75-1.75] 5'-6"	1676	5'-6"	1676	5'-6"	1676	5'-6"	1676	5'-6"	1676	
400 [2.0] 6'-0"	1829	6'-0"	1829	6'-0"	1829	6'-0"	1829	6'-0"	1829	
450-500 [2.25-2.5] 6'-6"	1981	6'-6"	1981	6'-6"	1981	6'-6"	1981	6'-6"	1981	
NOTE: For seismic conditions zone 2 and greater add to dimension (in)[mm]										
HW 4"	102	4"	102	4"	102	4"	102	4"	102	
HD 2"	51	2"	51	2"	51	2"	51	2"	51	
HWR 4"	102	4"	102	4"	102	4"	102	4"	102	

Notes:

1. Denotes non-compliance with ADA.
2. Will not accommodate ambulatory requirements.
3. Only in province of Alberta will not accommodate ambulatory requirements.
4. Designed for 8'-0" [2438] high Cab. For 9'-0" [2743] high Cab, Overhead + 1'-0" [305], for 10'-0" [3048] high Cab, Overhead + 2'-0" [610].
5. When occupable space is below hoistway, counterweight safeties are required. Add 9.5" [241] to the hoistway size of counterweight location.
6. For duplex or triplex with rear entrance, see drawing on next page to calculate hoistway needed.
7. Dimensional data is in accordance with ASME A17.1 and CAN/CSA B44 elevator codes.

* Any size, Any capacity, Any shape... We can do it; please contact us to customize your project!

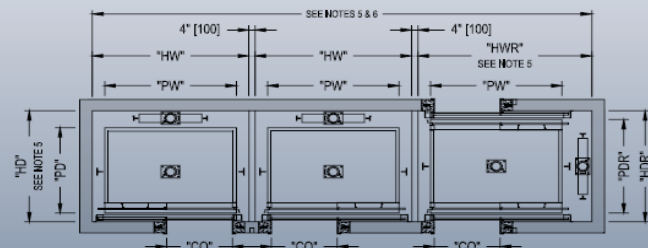
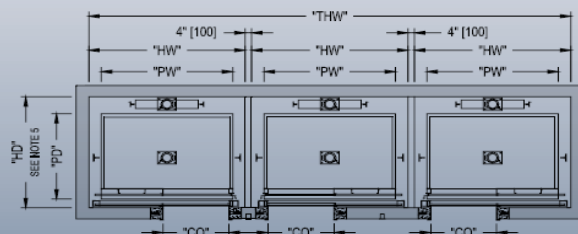
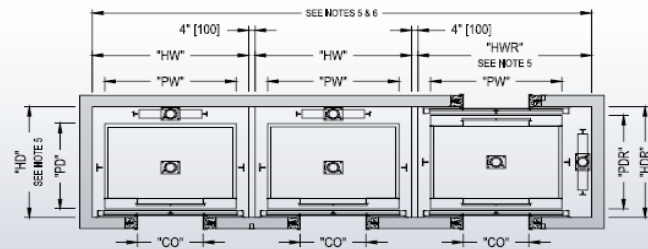
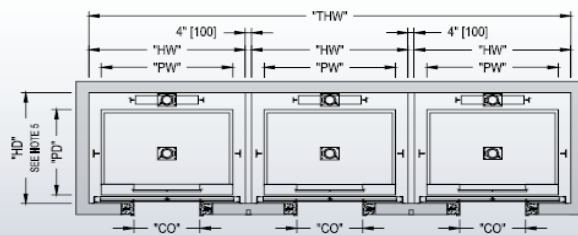
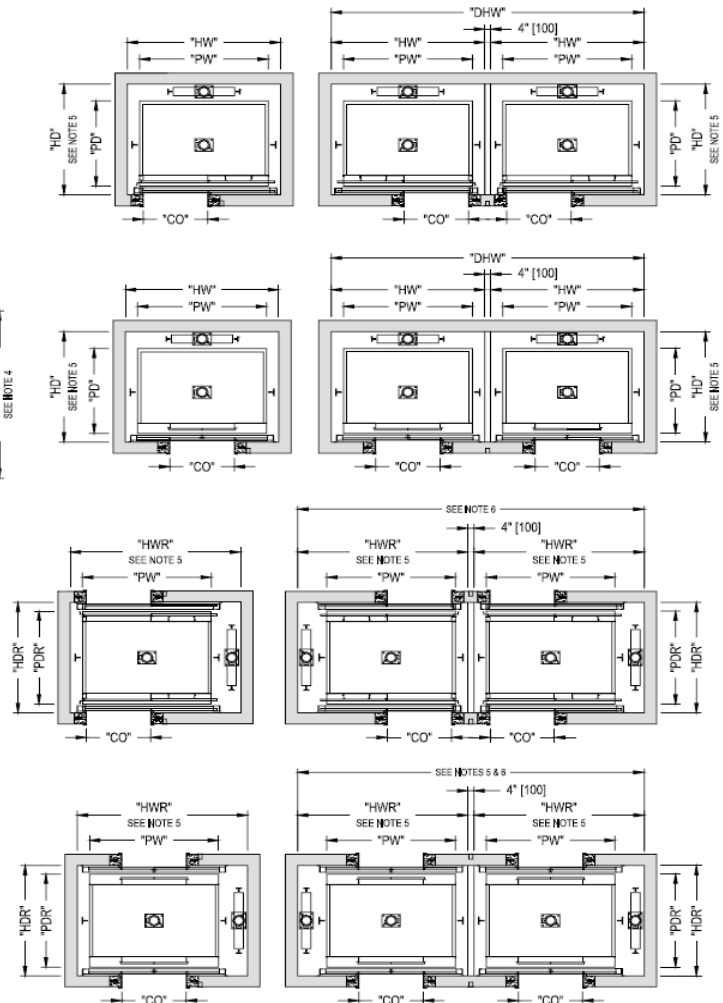
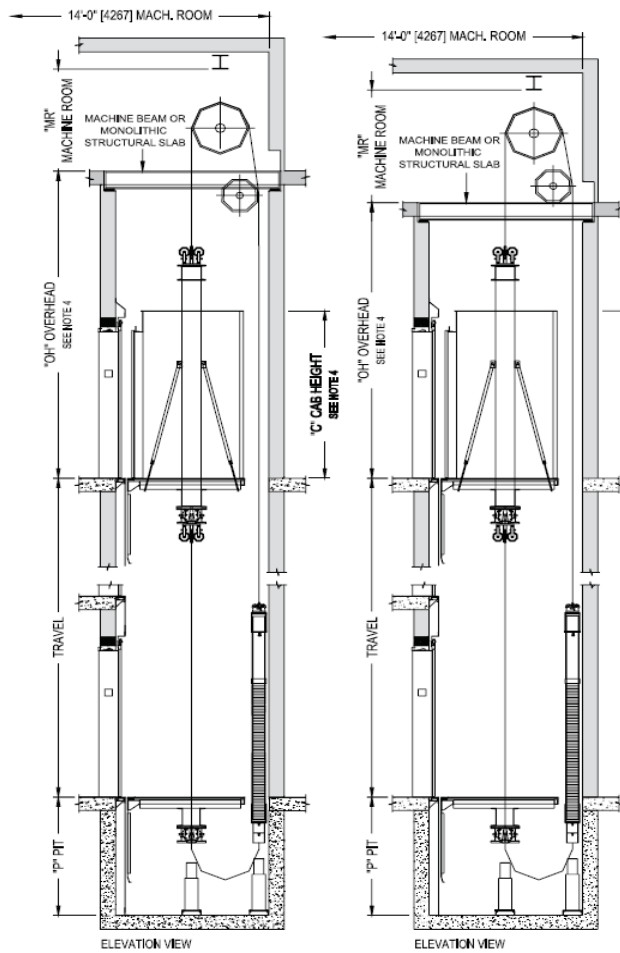
* WARNING * Do not use those dimensions for final construction purposes. Local Code or Code year application might require different spacing and will affect those dimensions. Please contact us for confirmation.



Le groupe manufacturier d'ascenseurs Global Tardif inc.

TRACTION ELEVATOR

GEARED OVERHEAD PASSENGER TYPE



TRACTION ELEVATOR

GEARED OVERHEAD HOSPITAL TYPE

FRONT / FRONT & REAR OPENING

Capacity (lbs)[Kg]	4000	1814	4500	2041	5000	2268
Speed (fpm)[m/s]	150 to 500	0.75 to 2.5	150 to 500	0.75 to 2.5	150 to 500	0.75 to 2.5
Elev. Dim. (in)[mm]						
PW	5'-8"	1727	6'-0"	1829	6'-3"	1905
PD	8'-10 1/2"	2705	8'-10 1/2"	2705	9'-5 1/2"	2883
PDR	9'-5 3/4"	2889	9'-5 3/4"	2889	10'-0 3/4"	3067
CO	4'-0"	1219	4'-0"	1219	4'-6"	1372
Entrance Type	2 Speed	2 Speed	2 Speed	2 Speed	2 Speed	2 Speed
Hoistway (in)[mm]						
HW ⁵	7'-8"	2337	8'-0"	2438	8'-3"	2515
DHW ⁶	15'-8"	4775	16'-4"	4978	16'-10"	5131
THW ⁶	23'-8"	7214	24'-8"	7518	25'-5"	7747
HD	9'-9"	2972	9'-9"	2972	10'-4"	3150
HDR	10'-9 1/4"	3283	10'-9 1/4"	3283	11'-4 1/4"	3461
M.R. Height (in)[mm]						
(Def. sheave in OH)	7'-6"	2286	7'-6"	2286	7'-6"	2286
(Def. Sheave in MR)	8'-6"	2591	8'-6"	2591	8'-6"	2591
Min. OH (fpm)[m/s]⁴						
(Def. sheave in MR)						
150-200 [0.75-1.0]	15'-0"	4572	15'-0"	4572	15'-0"	4572
250-350 [1.25-1.75]	16'-0"	4877	16'-0"	4877	16'-0"	4877
400 [2.0]	17'-0"	5182	17'-0"	5182	17'-0"	5182
450 [2.25]	18'-0"	5486	18'-0"	5486	18'-0"	5486
500 [2.5]	18'-0"	5486	18'-0"	5486	18'-0"	5486
Min. OH (fpm)[m/s]⁴						
(Def. sheave in OH)						
150-200 [0.75-1.0]	16'-6"	5029	16'-6"	5029	16'-6"	5029
250-350 [1.25-1.75]	17'-6"	5334	17'-6"	5334	17'-6"	5334
400 [2.0]	18'-6"	5639	18'-6"	5639	18'-6"	5639
450 [2.25]	19'-6"	5944	19'-6"	5944	19'-6"	5944
500 [2.5]	19'-6"	5944	19'-6"	5944	19'-6"	5944
Max. Travel (fpm)[m/s]						
150-200 [0.75-1.0]	150'-0"	45720	150'-0"	45720	150'-0"	45720
250-350 [1.25-1.75]	200'-0"	60960	200'-0"	60960	200'-0"	60960
400 [2.0]	350'-0"	106680	350'-0"	106680	350'-0"	106680
450 [2.25]	425'-0"	129540	425'-0"	129540	425'-0"	129540
500 [2.5]	450'-0"	137160	450'-0"	137160	450'-0"	137160
For higher travel, please contact us.						
Pit Depth P (fpm)[m/s]						
150-350 [0.75-1.75]	5'-6"	1676	5'-6"	1676	5'-6"	1676
400 [2.0]	6'-0"	1829	6'-0"	1829	6'-0"	1829
450-500 [2.25-2.5]	6'-6"	1981	6'-6"	1981	6'-6"	1981
NOTE: For seismic conditions zone 2 and greater add to dimension (in)[mm]						
HW	4"	102	4"	102	4"	102
HD	1"	25	1"	25	1"	25

Notes:

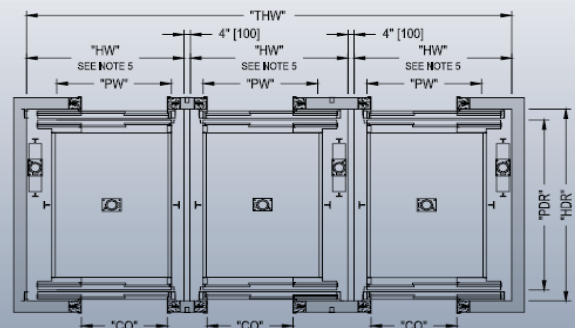
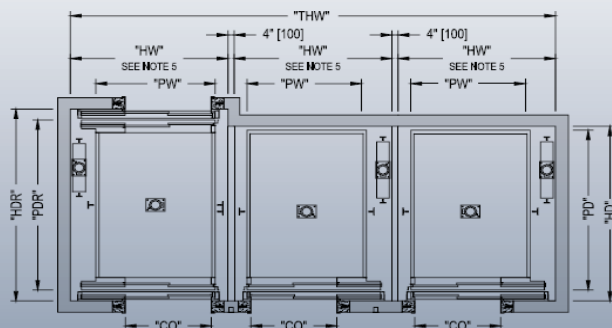
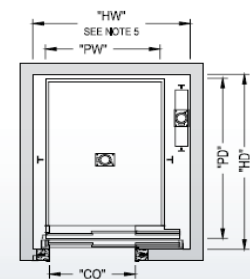
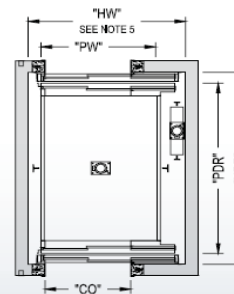
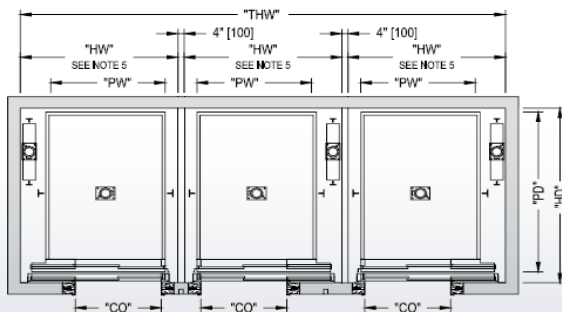
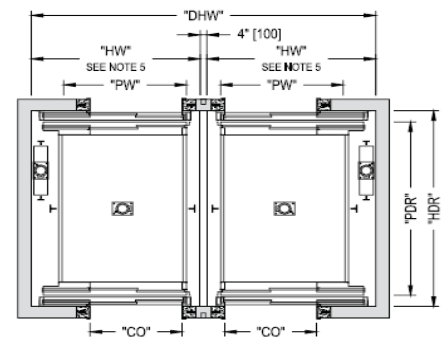
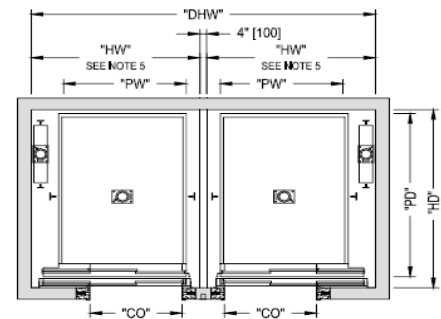
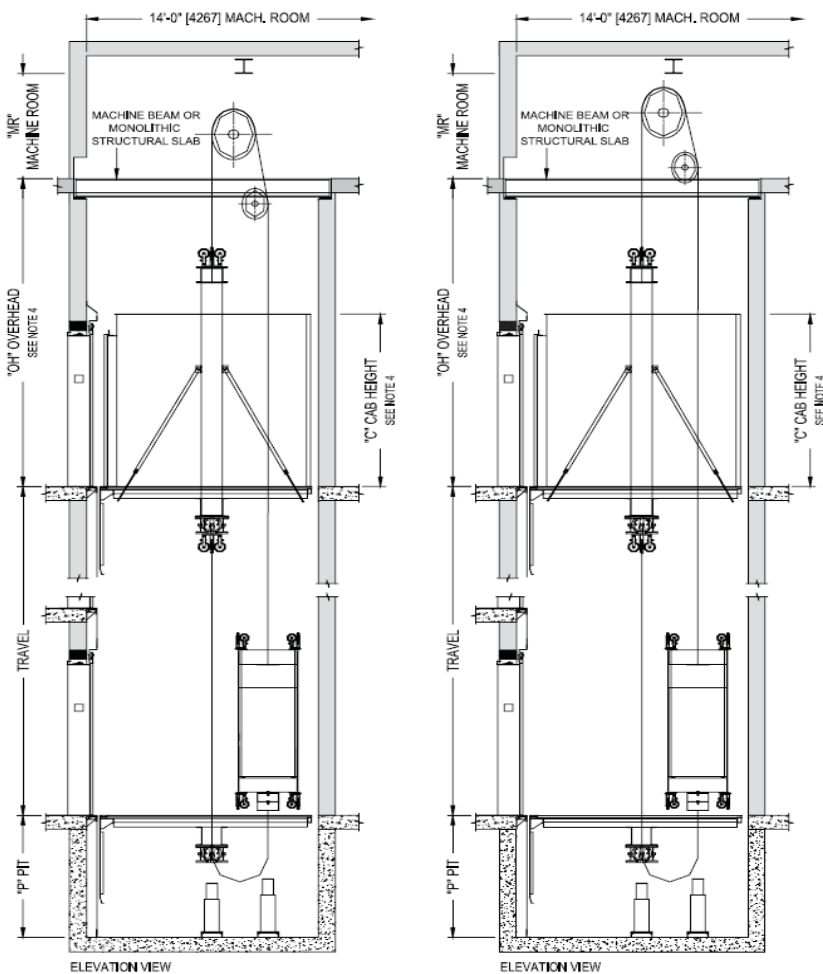
- Designed for 8'-0" [2438] high Cab. For 9'-0" [2743] high Cab, Overhead + 1'-0" [305], for 10'-0" [3048] high Cab, Overhead + 2'-0" [610].
- When occupable space is below hoistway, counterweight safeties are required. Add 9.5" [241] to the hoistway size of counterweight location.
- For duplex or triplex with rear entrance, see drawing on next page to calculate hoistway needed.
- Dimensional data is in accordance with ASME A17.1 and CAN/CSA B44 elevator codes.

* Any size, Any capacity, Any shape... We can do it; please contact us to customize your project!

* WARNING * Do not use those dimensions for final construction purposes. Local Code or Code year application might require different spacing and will affect those dimensions. Please contact us for confirmation.

TRACTION ELEVATOR

GEARED OVERHEAD HOSPITAL TYPE





Le groupe manufacturier d'ascenseurs Global Tardif inc.

TRACTION ELEVATOR

GEARLESS OVERHEAD PASSENGER TYPE

FRONT / FRONT & REAR OPENING

Capacity (lbs)[Kg]	2500	1134	3000	1361	3500	1588
Speed (fpm)[m/s]	700 to 1200	3.6 to 6.1	700 to 1200	3.6 to 6.1	700 to 1200	3.6 to 6.1
Elev. Dim. (in)[mm]						
PW	7'-0"	2134	7'-0"	2134	7'-0"	2134
PD	5'-1"	1549	5'-7"	1702	6'-3"	1905
PDR	5'-6 3/4"	1695	6'-0 3/4"	1848	6'-8 3/4"	2051
CO	3'-6"	1067	3'-6"	1067	3'-6"	1067

Entrance Type

1 Speed or CO² 1 Speed or CO² 1 Speed or CO² 1 Speed or CO² 1 Speed or CO³ 1 Speed or CO³

Hoistway (in)[mm]						
HW	8'-4"	2540	8'-4"	2540	8'-4"	2540
HWR ⁵	9'-8"	2946	9'-8"	2946	9'-8"	2946
DHW ^{5,6}	17'-0"	5182	17'-0"	5182	17'-0"	5182
THW ^{5,6}	25'-8"	7823	25'-8"	7823	25'-8"	7823
HD ⁵	6'-11 1/4"	2115	7'-5 1/4"	2267	8'-1 1/4"	2470
HDR	6'-7 1/4"	2013	7'-1 1/4"	2165	7'-9 1/4"	2369

M.R. Height (in)[mm]

(Def. sheave in OH)	7'-6"	2286	7'-6"	2286	7'-6"	2286
(Def. Sheave in MR)	8'-6"	2591	8'-6"	2591	8'-6"	2591

Min. OH (fpm)[m/s]*

(Def. sheave in MR)						
700 [3.6]	22'-0"	6706	22'-0"	6706	22'-0"	6706
800 [4.1]	22'-6"	6858	22'-6"	6858	22'-6"	6858
1000 [5.1]	26'-0"	7925	26'-0"	7925	26'-0"	7925
1200 [6.1]	27'-6"	8382	27'-6"	8382	27'-6"	8382

Min. OH (fpm)[m/s]*

(Def. sheave in OH)						
700 [3.6]	24'-0"	7315	24'-0"	7315	24'-0"	7315
800 [4.1]	24'-6"	7468	24'-6"	7468	24'-6"	7468
1000 [5.1]	28'-0"	8534	28'-0"	8534	28'-0"	8534
1200 [6.1]	29'-6"	8992	29'-6"	8992	29'-6"	8992

Max. Travel (fpm)[m/s]

700 [3.6]	450'-0"	137160	450'-0"	137160	450'-0"	137160
800 [4.1]	520'-0"	158496	520'-0"	158496	520'-0"	158496
1000 [5.1]	620'-0"	188976	620'-0"	188976	620'-0"	188976
1200 [6.1]	750'-0"	228600	750'-0"	228600	750'-0"	228600

For higher travel, please contact us.

Pit Depth P (fpm)[m/s]						
700 [3.6]	12'-0"	3658	12'-0"	3658	12'-0"	3658
800 [4.1]	12'-0"	3658	12'-0"	3658	12'-0"	3658
1000 [5.1]	16'-0"	4877	16'-0"	4877	16'-0"	4877
1200 [6.1]	19'-0"	5791	19'-0"	5791	19'-0"	5791

NOTE: For seismic conditions zone 2 and greater add to dimension (in)[mm]

HW	4"	102	4"	102	4"	102
HD	2"	51	2"	51	2"	51
HWR	4"	102	4"	102	4"	102

Notes:

1. Denotes non-compliance with ADA.
2. Will not accommodate ambulatory requirements.
3. Only in province of Alberta will not accommodate ambulatory requirements.
4. Designed for 8'-0" [2438] high Cab. For 9'-0" [2743] high Cab, Overhead + 1'-0" [305], for 10'-0" [3048] high Cab, Overhead + 2'-0" [610].
5. When occupable space is below hoistway, counterweight safeties are required. Add 9.5" [241] to the hoistway size of counterweight location.
6. For duplex or triplex with rear entrance, see drawing on next page to calculate hoistway needed.
7. Dimensional data is in accordance with ASME A17.1 and CAN/CSA B44 elevator codes.

* Any size, Any capacity, Any shape... We can do it; please contact us to customize your project!

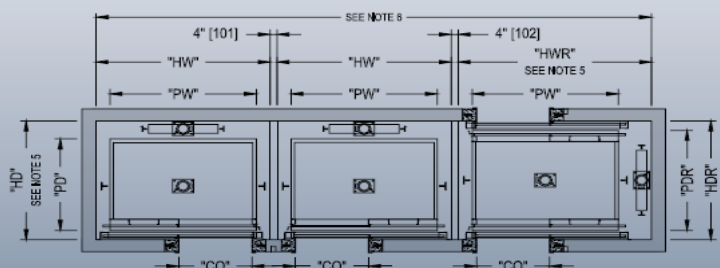
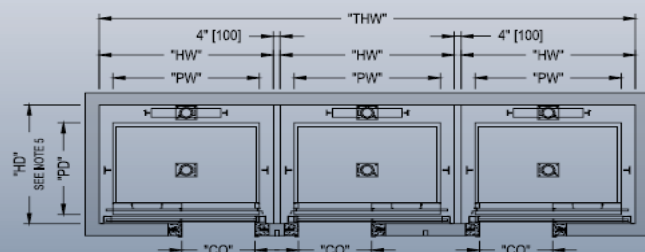
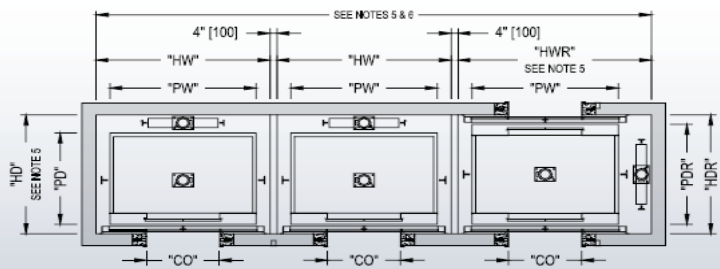
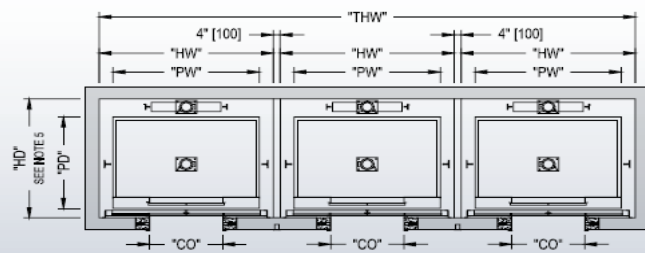
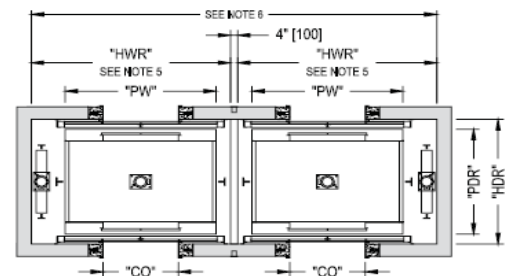
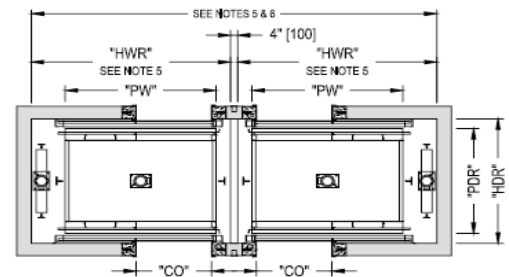
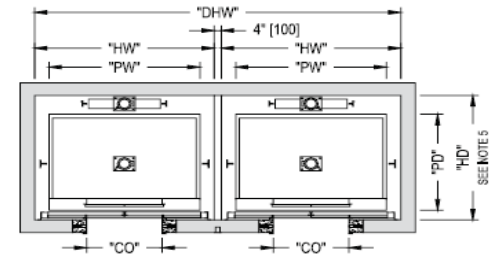
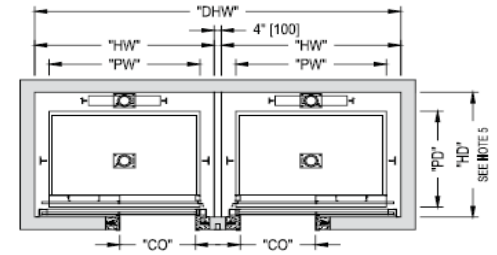
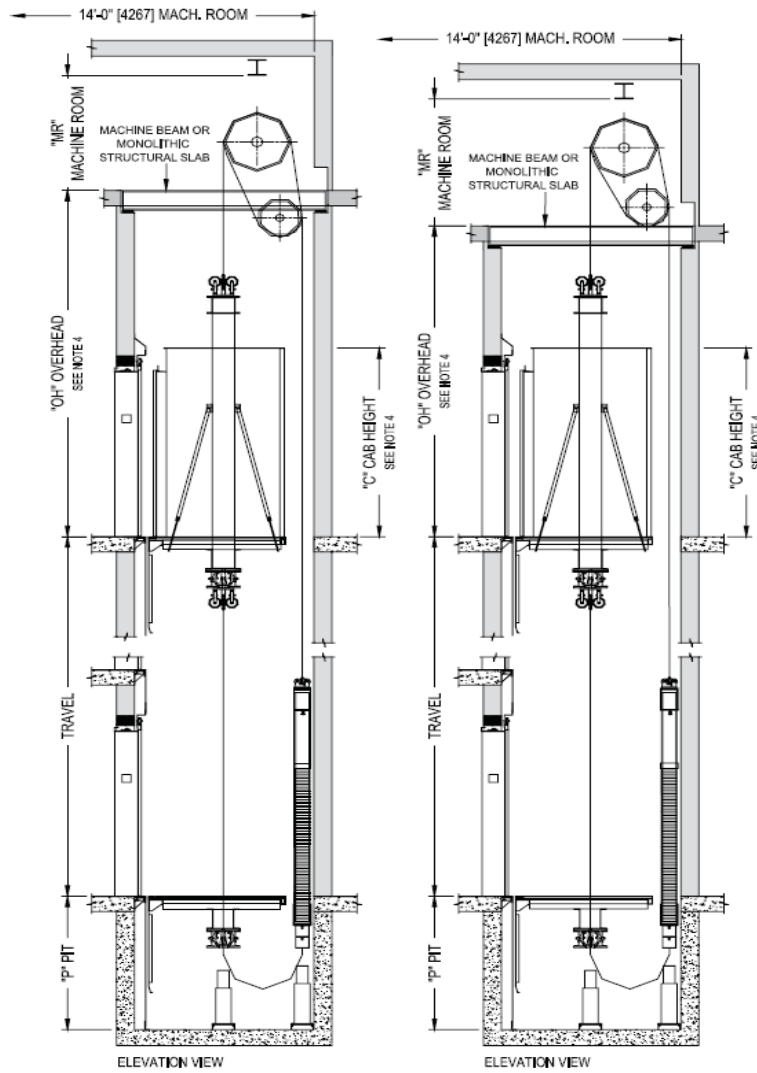
* WARNING * Do not use those dimensions for final construction purposes. Local Code or Code year application might require different spacing and will affect those dimensions. Please contact us for confirmation.



Le groupe manufacturier d'ascenseurs Global Tardif inc.

TRACTION ELEVATOR

GEARLESS OVERHEAD PASSENGER TYPE





Le groupe manufacturier d'ascenseurs Global Tardif inc.

TRACTION ELEVATOR

GEARLESS OVERHEAD HOSPITAL TYPE

FRONT / FRONT & REAR OPENING

Capacity (lbs)[Kg]	4000	1814	4500	2041	5000	2268
Speed (fpm)[m/s]	700 to 1200	3.6 to 6.1	700 to 1200	3.6 to 6.1	700 to 1200	3.6 to 6.1
Elev. Dim. (in)[mm]						
PW	5'-8"	1727	6'-0"	1829	6'-3"	1905
PD	8'-10 1/2"	2705	8'-10 1/2"	2705	9'-5 1/2"	2883
PDR	9'-5 3/4"	2889	9'-5 3/4"	2889	10'-0 3/4"	3067
CO	4'-0"	1219	4'-0"	1219	4'-6"	1372
Entrance Type	2 Speed	2 Speed	2 Speed	2 Speed	2 Speed	2 Speed
Hoistway (in)[mm]						
HW ⁵	8'-0"	2438	8'-4"	2540	8'-7"	2616
DHW ⁶	16'-4"	4978	17'-0"	5182	17'-6"	5334
THW ⁶	24'-8"	7518	25'-8"	7823	26'-5"	8052
HD	9'-9"	2972	9'-9"	2972	10'-4"	3150
HDR	10'-9 1/4"	3283	10'-9 1/4"	3283	11'-4 1/4"	3461
M.R. Height (in)[mm]						
(Def. sheave in OH)	7'-6"	2286	7'-6"	2286	7'-6"	2286
(Def. Sheave in MR)	8'-6"	2591	8'-6"	2591	8'-6"	2591
Min. OH (fpm)[m/s]⁴						
(Def. sheave in MR)						
700 [3.6]	22'-0"	6706	22'-0"	6706	22'-0"	6706
800 [4.1]	22'-6"	6858	22'-6"	6858	22'-6"	6858
1000 [5.1]	26'-0"	7925	26'-0"	7925	26'-0"	7925
1200 [6.1]	27'-6"	8382	27'-6"	8382	27'-6"	8382
Min. OH (fpm)[m/s]⁴						
(Def. sheave in OH)						
700 [3.6]	24'-0"	7315	24'-0"	7315	24'-0"	7315
800 [4.1]	24'-6"	7468	24'-6"	7468	24'-6"	7468
1000 [5.1]	28'-0"	8534	28'-0"	8534	28'-0"	8534
1200 [6.1]	29'-6"	8992	29'-6"	8992	29'-6"	8992
Max. Travel (fpm)[m/s]						
700 [3.6]	500'-0"	152400	500'-0"	152400	500'-0"	152400
800 [4.1]	520'-0"	158496	520'-0"	158496	520'-0"	158496
1000 [5.1]	620'-0"	188976	620'-0"	188976	620'-0"	188976
1200 [6.1]	750'-0"	228600	750'-0"	228600	750'-0"	228600
For higher travel, please contact us.						
Pit Depth P (fpm)[m/s]						
700 [3.6]	12'-0"	3658	12'-0"	3658	12'-0"	3658
800 [4.1]	12'-0"	3658	12'-0"	3658	12'-0"	3658
1000 [5.1]	16'-0"	4877	16'-0"	4877	16'-0"	4877
1200 [6.1]	19'-0"	5791	19'-0"	5791	19'-0"	5791
NOTE: For seismic conditions zone 2 and greater add to dimension (in)[mm]						
HW	4"	102	4"	102	4"	102
HD	1"	25	1"	25	1"	25

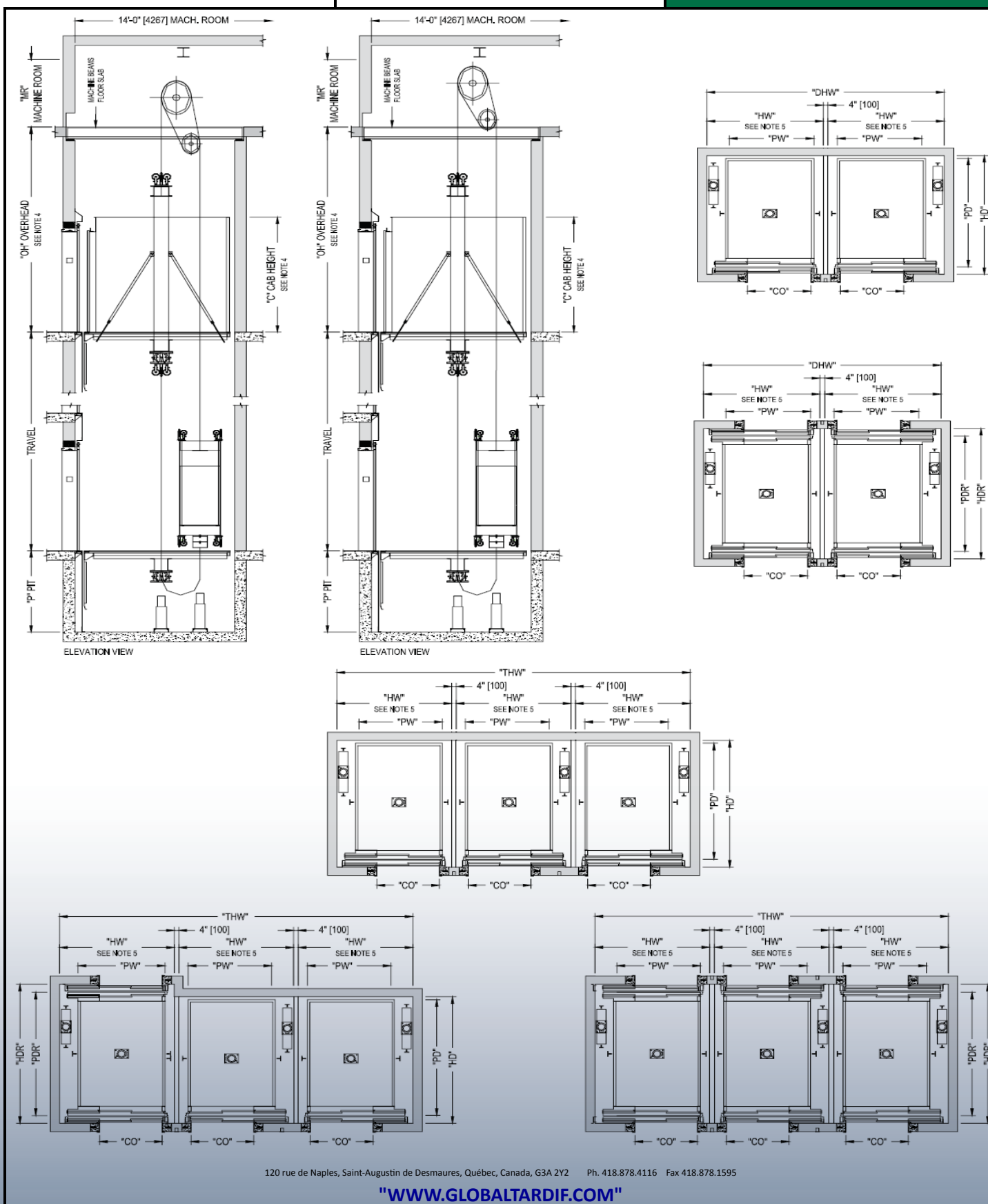
Notes:

4. Designed for 8'-0" [2438] high Cab. For 9'-0" [2743] high Cab, Overhead + 1'-0" [305], for 10'-0" [3048] high Cab, Overhead + 2'-0" [610].
5. When occupable space is below hoistway, counterweight safeties are required. Add 9.5" [241] to the hoistway size of counterweight location.
6. For duplex or triplex with rear entrance, see drawing on next page to calculate hoistway needed.
7. Dimensional data is in accordance with ASME A17.1 and CAN/CSA B44 elevator codes.

* Any size, Any capacity, Any shape... We can do it; please contact us to customize your project!

* WARNING * Do not use those dimensions for final construction purposes. Local Code or Code year application might require different spacing and will affect those dimensions. Please contact us for confirmation.

GEARLESS OVERHEAD





Le groupe manufacturier d'ascenseurs Global Tardif Inc.

TRACTION ELEVATOR

GEARED BASEMENT PASSENGER TYPE

FRONT / FRONT & REAR OPENING										
Capacity (lbs)[Kg]	2100	953	2500	1134	3000	1361	3500	1588	4000	1814
Speed (fpm)[m/s]	150 to 500	0.75 to 2.5	150 to 500	0.75 to 2.5	150 to 500	0.75 to 2.5	150 to 500	0.75 to 2.5	150 to 500	0.75 to 2.5
Elev. Dim. (in)[mm]										
PW	6'-0"	1829	7'-0"	2134	7'-0"	2134	7'-0"	2134	8'-0"	2438
PD	5'-1"	1549	5'-1"	1549	5'-7"	1702	6'-3"	1905	6'-3"	1905
PDR	5'-6 3/4"	1695	5'-6 3/4"	1695	6'-0 3/4"	1848	6'-8 3/4"	2051	6'-8 3/4"	2051
CO	3'-0"	914	3'-6"	1067	3'-6"	1067	3'-6"	1067	4'-0"	1219
Entrance Type	1 Speed ² or CO ^{1,2}	1 Speed ² or CO ^{1,2}	1 Speed or CO ²	1 Speed or CO ²	1 Speed or CO ²	1 Speed or CO ²	1 Speed or CO ³	1 Speed or CO ³	CO ³	CO ³
Hoistway (in)[mm]										
HW	7'-4"	2235	8'-4"	2540	8'-4"	2540	8'-4"	2540	9'-4"	2845
HWR ⁵	8'-5"	2565	9'-5"	2870	9'-5"	2870	9'-5"	2870	10'-5"	3175
DHW	15'-0"	4572	17'-0"	5182	17'-0"	5182	17'-0"	5182	19'-0"	5791
DHWR ⁵	17'-2"	5232	19'-2"	5842	19'-2"	5842	19'-2"	5842	21'-2"	6452
HD ⁵	7'-0"	2134	7'-0"	2134	7'-6"	2286	8'-2"	2489	8'-2"	2489
HDR	6'-7 1/4"	2013	6'-7 1/4"	2013	7'-1 1/4"	2165	7'-9 1/4"	2369	7'-9 1/4"	2369
Min. OH (fpm)[m/s]*										
150-200 [0.75-1.0]	18'-6"	5639	18'-6"	5639	18'-6"	5639	18'-6"	5639	18'-6"	5639
250-350 [1.25-1.75]	19'-4"	5893	19'-4"	5893	19'-4"	5893	19'-4"	5893	19'-4"	5893
400 [2.0]	19'-9"	6020	19'-9"	6020	19'-9"	6020	19'-9"	6020	19'-9"	6020
450 [2.25]	21'-0"	6401	21'-0"	6401	21'-0"	6401	21'-0"	6401	21'-0"	6401
500 [2.5]	21'-0"	6401	21'-0"	6401	21'-0"	6401	21'-0"	6401	21'-0"	6401
Max. Travel (fpm)[m/s]										
150-200 [0.75-1.0]	150'-0"	45720	150'-0"	45720	150'-0"	45720	150'-0"	45720	150'-0"	45720
250-350 [1.25-1.75]	200'-0"	60960	200'-0"	60960	200'-0"	60960	200'-0"	60960	200'-0"	60960
400 [2.0]	350'-0"	106680	350'-0"	106680	350'-0"	106680	350'-0"	106680	350'-0"	106680
450 [2.25]	425'-0"	129540	425'-0"	129540	425'-0"	129540	425'-0"	129540	425'-0"	129540
500 [2.5]	450'-0"	137160	450'-0"	137160	450'-0"	137160	450'-0"	137160	450'-0"	137160
For higher travel, please contact us.										
Pit Depth P (fpm)[m/s]										
150-350 [0.75-1.75]	5'-6"	1676	5'-6"	1676	5'-6"	1676	5'-6"	1676	5'-6"	1676
400 [2.0]	6'-0"	1829	6'-0"	1829	6'-0"	1829	6'-0"	1829	6'-0"	1829
450-500 [2.25-2.5]	6'-6"	1981	6'-6"	1981	6'-6"	1981	6'-6"	1981	6'-6"	1981
NOTE: For seismic conditions zone 2 and greater add to dimension (in)[mm]										
HW	4"	102	4"	102	4"	102	4"	102	4"	102
HD	2"	51	2"	51	2"	51	2"	51	2"	51
HWR	4"	102	4"	102	4"	102	4"	102	4"	102

Notes:

1. Denotes non-compliance with ADA.
2. Will not accommodate ambulatory requirements.
3. Only in province of Alberta will not accommodate ambulatory requirements.
4. Designed for 8'-0" [2438] high Cab. For 9'-0" [2743] high Cab, Overhead + 1'-0" [305], for 10'-0" [3048] high Cab, Overhead + 2'-0" [610].
5. When occupable space is below hoistway, counterweight safeties are required. Add 9.5" [241] to the hoistway size of counterweight location.
6. Dimensional data is in accordance with ASME A17.1 and CAN/CSA B44 elevator codes.

* Any size, Any capacity, Any shape... We can do it; please contact us to customize your project!

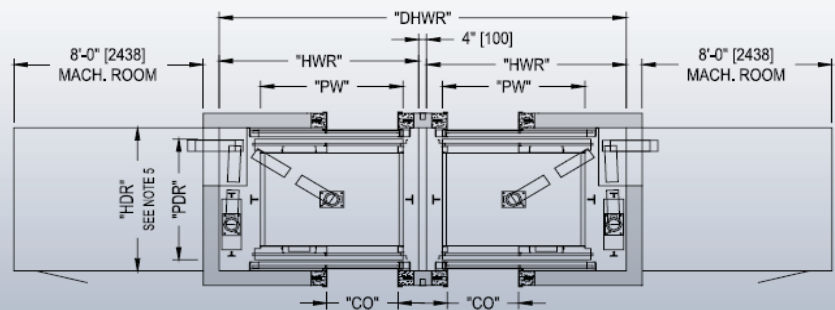
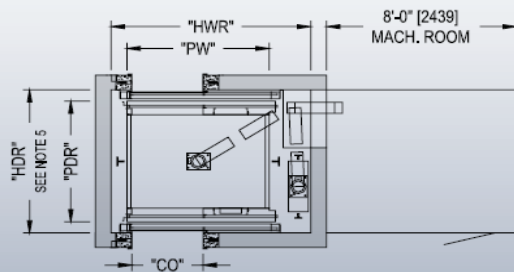
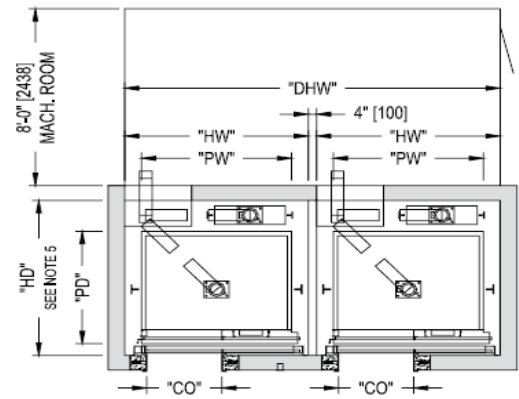
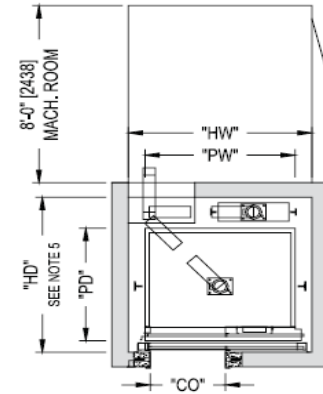
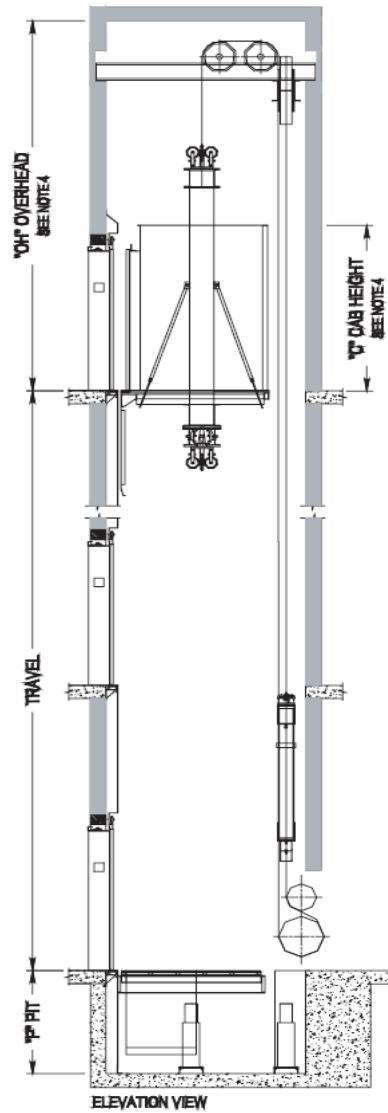
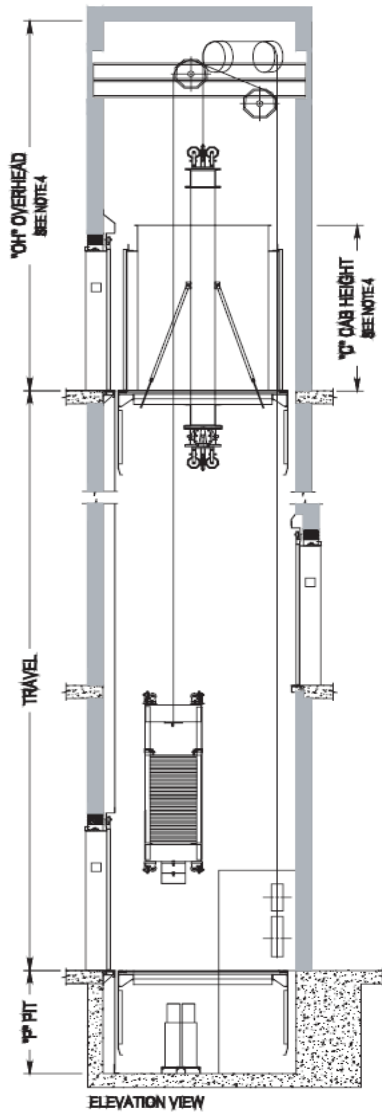
* WARNING * Do not use those dimensions for final construction purposes. Local Code or Code year application might require different spacing and will affect those dimensions. Please contact us for confirmation.



Le groupe manufacturier d'ascenseurs Global Tardif inc.

TRACTION ELEVATOR

GEARED BASEMENT PASSENGER TYPE





Le groupe manufacturier d'ascenseurs Global Tardif inc.

TRACTION ELEVATOR

GEARED BASEMENT HOSPITAL TYPE

FRONT / FRONT & REAR OPENING

Capacity (lbs)[Kg]	4000	1814	4500	2041
Speed (fpm)[m/s]	150 to 500	0.75 to 2.5	150 to 500	0.75 to 2.5
Elev. Dim. (in)[mm]				
PW	5'-8"	1727	6'-0"	1829
PD	8'-10 1/2"	2705	8'-10 1/2"	2705
PDR	9'-5 3/4"	2889	9'-5 3/4"	2889
CO	4'-0"	1219	4'-0"	1219
Entrance Type	2 Speed	2 Speed	2 Speed	2 Speed
Hoistway (in)[mm]				
HW ⁵	8'-1"	2464	8'-5"	2565
DHW ^{5,6}	16'-6"	5029	17'-2"	5232
HD	9'-9"	2972	9'-9"	2972
HDR	10'-9 1/4"	3283	10'-9 1/4"	3283
Min. OH (fpm)[m/s] ⁴				
150-200 [0.75-1.0]	18'-6"	5639	18'-6"	5639
250-350 [1.25-1.75]	19'-4"	5893	19'-4"	5893
400 [2.0]	19'-9"	6020	19'-9"	6020
450 [2.25]	21'-0"	6401	21'-0"	6401
500 [2.5]	21'-0"	6401	21'-0"	6401
Max. Travel (fpm)[m/s]				
150-200 [0.75-1.0]	150'-0"	45720	150'-0"	45720
250-350 [1.25-1.75]	200'-0"	60960	200'-0"	60960
400 [2.0]	350'-0"	106680	350'-0"	106680
450 [2.25]	425'-0"	129540	425'-0"	129540
500 [2.5]	450'-0"	137160	450'-0"	137160
For higher travel, please contact us.				
Pit Depth P (fpm)[m/s]				
150-350 [0.75-1.75]	5'-6"	1676	5'-6"	1676
400 [2.0]	6'-0"	1829	6'-0"	1829
450-500 [2.25-2.5]	6'-6"	1981	6'-6"	1981
NOTE: For seismic conditions zone 2 and greater add to dimension (in)[mm]				
HW	4"	102	4"	102
HD	1"	25	1"	25

Notes:

4. Designed for 8'-0" [2438] high Cab. For 9'-0" [2743] high Cab, Overhead + 1'-0" [305], for 10'-0" [3048] high Cab, Overhead + 2'-0" [610].
5. When occupable space is below hoistway, counterweight safeties are required. Add 9.5" [241] to the hoistway size of counterweight location.
6. For duplex with rear entrance, see drawing on next page to calculate hoistway needed.
7. Dimensional data is in accordance with ASME A17.1 and CAN/CSA B44 elevator codes.

* Any size, Any capacity, Any shape... We can do it; please contact us to customize your project!

* WARNING * Do not use those dimensions for final construction purposes. Local Code or Code year application might require different spacing and will affect those dimensions. Please contact us for confirmation.

120 rue de Naples, Saint-Augustin de Desmaures, Québec, Canada, G3A 2Y2 Ph. 418.878.4116 Fax 418.878.1595

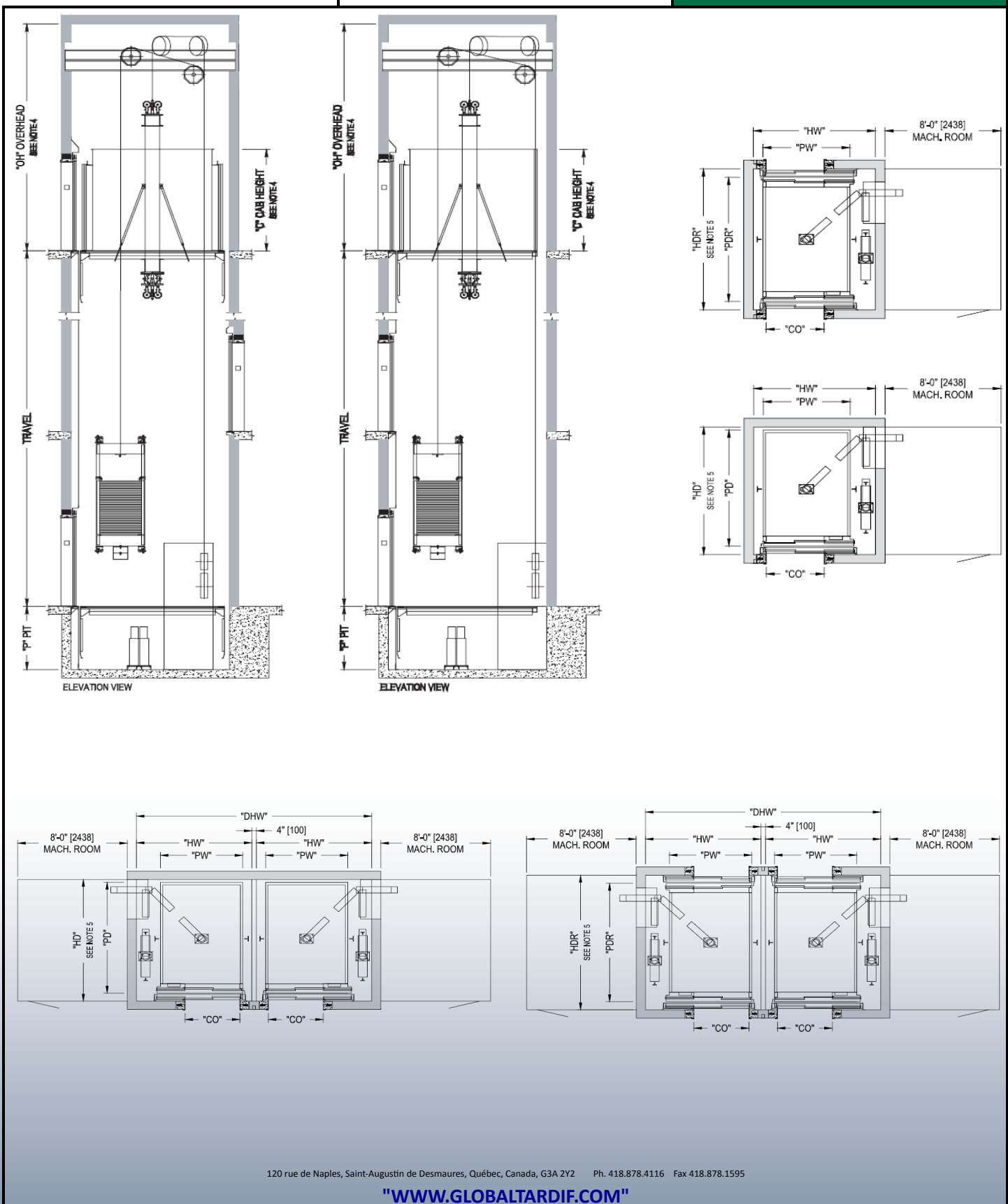
"WWW.GLOBALTARDIF.COM"



Le groupe manufacturier d'ascenseurs Global Tardif inc.

TRACTION ELEVATOR

GEARED BASEMENT HOSPITAL TYPE





Le groupe manufacturier d'ascenseurs Global Tardif inc.

TRACTION ELEVATOR

GEARED SIDEMOUNT PASSENGER TYPE

FRONT / FRONT & REAR OPENING											
Capacity (lbs)[Kg]	2100		953	2500	1134	3000	1361	3500	1588	4000	1814
Speed (fpm)[m/s]	150 to 500		0.75 to 2.5	150 to 500	0.75 to 2.5	150 to 500	0.75 to 2.5	150 to 500	0.75 to 2.5	150 to 450	0.75 to 2.5
Elev. Dim. (in)[mm]											
	PW	6'-0"	1829	7'-0"	2134	7'-0"	2134	7'-0"	2134	8'-0"	2438
	PD	5'-1"	1549	5'-1"	1549	5'-7"	1702	6'-3"	1905	6'-3"	1905
	PDR	5'-6 3/4"	1695	5'-6 3/4"	1695	6'-0 3/4"	1848	6'-8 3/4"	2051	6'-8 3/4"	2051
	CO	3'-0"	914	3'-6"	1067	3'-6"	1067	3'-6"	1067	4'-0"	1219
Entrance Type	1 Speed ² or CO ^{1,2}		1 Speed ² or CO ^{1,2}	1 Speed or CO ²	1 Speed or CO ²	1 Speed or CO ²	1 Speed or CO ²	1 Speed or CO ³	1 Speed or CO ³	CO ³	CO ³
Hoistway (in)[mm]											
	HW	7'-4"	2235	8'-4"	2540	8'-4"	2540	8'-4"	2540	9'-4"	2845
	HWR ⁵	8'-3"	2515	9'-3"	2819	9'-3"	2819	9'-3"	2819	10'-3"	3124
	DHW ⁵	15'-0"	4572	17'-0"	5182	17'-0"	5182	17'-0"	5182	19'-0"	5791
	DHWR ⁵	16'-10"	5131	18'-10"	5740	18'-10"	5740	18'-10"	5740	20'-10"	6350
	HD ⁵	7'-0"	2134	7'-0"	2134	7'-6"	2286	8'-2"	2489	8'-2"	2489
	HDR	6'-7 1/4"	2013	6'-7 1/4"	2013	7'-1 1/4"	2165	7'-9 1/4"	2369	7'-9 1/4"	2369
Min. OH (fpm)[m/s]*											
(Def. sheave in MR)											
150-200 [0.75-1.0]	17'-6"	5334	17'-6"	5334	17'-6"	5334	17'-6"	5334	17'-6"	5334	5334
250-350 [1.25-1.75]	18'-4"	5588	18'-4"	5588	18'-4"	5588	18'-4"	5588	18'-4"	5588	5588
400 [2.0]	18'-9"	5715	18'-9"	5715	18'-9"	5715	18'-9"	5715	18'-9"	5715	5715
450 [2.25]	20'-0"	6096	20'-0"	6096	20'-0"	6096	20'-0"	6096	20'-0"	6096	6096
500 [2.5]	20'-0"	6096	20'-0"	6096	20'-0"	6096	20'-0"	6096	20'-0"	6096	6096
Max. Travel (fpm)[m/s]											
150-200 [0.75-1.0]	150'-0"	45720	150'-0"	45720	150'-0"	45720	150'-0"	45720	150'-0"	150'-0"	45720
250-350 [1.25-1.75]	200'-0"	60960	200'-0"	60960	200'-0"	60960	200'-0"	60960	200'-0"	200'-0"	60960
400 [2.0]	350'-0"	106680	350'-0"	106680	350'-0"	106680	350'-0"	106680	350'-0"	350'-0"	106680
450 [2.25]	425'-0"	129450	425'-0"	129450	425'-0"	129450	425'-0"	129450	425'-0"	425'-0"	129450
500 [2.5]	450'-0"	137160	450'-0"	137160	450'-0"	137160	450'-0"	137160	450'-0"	450'-0"	137160
For higher travel, please contact us.											
Pit Depth P (fpm)[m/s]											
150-350 [0.75-1.75]	5'-6"	1676	5'-6"	1676	5'-6"	1676	5'-6"	1676	1676	5'-6"	1676
400 [2.0]	6'-0"	1829	6'-0"	1829	6'-0"	1829	6'-0"	1829	1829	6'-0"	1829
450-500 [2.25-2.5]	6'-6"	1981	6'-6"	1981	6'-6"	1981	6'-6"	1981	1981	6'-6"	1981
NOTE: For seismic conditions zone 2 and greater add to dimension (in)[mm]											
	HW	4"	102	4"	102	4"	102	4"	102	4"	102
	HD	2"	51	2"	51	2"	51	2"	51	2"	51
	HWR	4"	102	4"	102	4"	102	4"	102	4"	102

Notes:

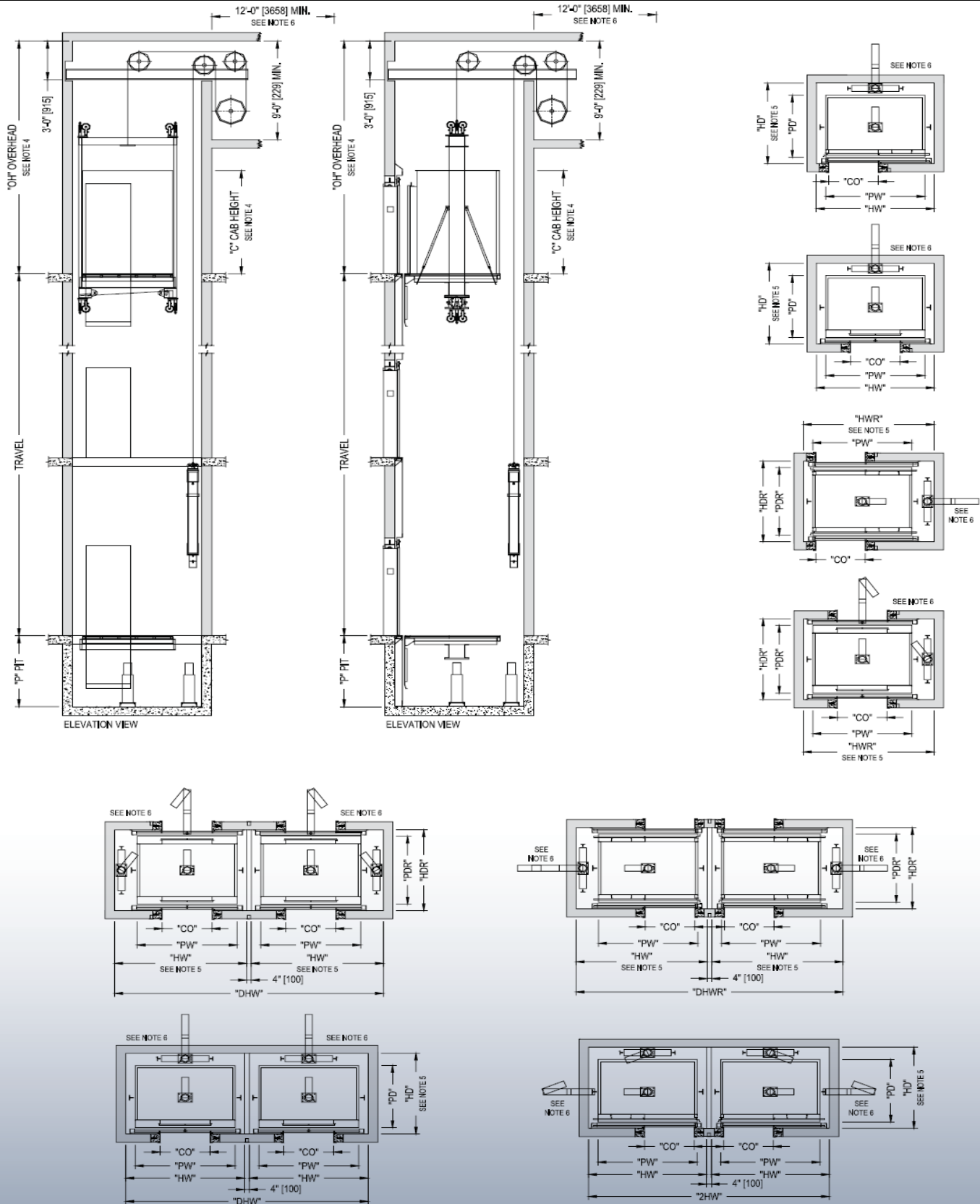
1. Denotes non-compliance with ADA.
2. Will not accommodate ambulatory requirements.
3. Only in province of Alberta will not accommodate ambulatory requirements.
4. Designed for 8'-0" [2438] high Cab. For 9'-0" [2743] high Cab, Overhead + 1'-0" [305], for 10'-0" [3048] high Cab, Overhead + 2'-0" [610].
5. When occupable space is below hoistway, counterweight safeties are required. Add 9.5" [241] to the hoistway size of counterweight location.
6. Machine room size to be 12'-0" [3658] deep by, at least, the width of the required hoistway.
7. Dimensional data is in accordance with ASME A17.1 and CAN/CSA B44 elevator codes.

* Any size, Any capacity, Any shape... We can do it; please contact us to customize your project!

* WARNING * Do not use those dimensions for final construction purposes. Local Code or Code year application might require different spacing and will affect those dimensions. Please contact us for confirmation.

TRACTION ELEVATOR

GEARED SIDEMOUNT PASSENGER TYPE





Le groupe manufacturier d'ascenseurs Global Tardif inc.

TRACTION ELEVATOR

GEARED SIDEMOUNT HOSPITAL TYPE

FRONT / FRONT & REAR OPENING

Capacity (lbs)[Kg]	4000	1814	4500	2041	5000	2268
Speed (fpm)[m/s]	150 to 500	0.75 to 2.5	150 to 500	0.75 to 2.5	150 to 500	0.75 to 2.5
Elev. Dim. (in)[mm]						
PW	5'-8"	1727	6'-0"	1829	6'-3"	1905
PD	8'-10 1/2"	2705	8'-10 1/2"	2705	9'-5 1/2"	2883
PDR	9'-5 3/4"	2889	9'-5 3/4"	2889	10'-0 3/4"	3067
CO	4'-0"	1219	4'-0"	1219	4'-6"	1372
Entrance Type	2 Speed	2 Speed	2 Speed	2 Speed	2 Speed	2 Speed
Hoistway (in)[mm]						
HW ⁵	7'-8"	2337	8'-0"	2438	8'-3"	2515
DHW ⁸	15'-8"	4775	16'-4"	4978	16'-10"	5131
HD	9'-9"	2972	9'-9"	2972	10'-4"	3150
HDR ⁵	10'-9 1/2"	3289	10'-9 1/2"	3289	11'-4 1/4"	3461
Min. OH (fpm)[m/s] ⁴						
150-200 [0.75-1.0]	17'-6"	5334	17'-6"	5334	17'-6"	5334
250-350 [1.25-1.75]	18'-4"	5588	18'-4"	5588	18'-4"	5588
400 [2.0]	18'-9"	5715	18'-9"	5715	18'-9"	5715
450 [2.25]	20'-0"	6096	20'-0"	6096	20'-0"	6096
500 [2.5]	20'-0"	6096	20'-0"	6096	20'-0"	6096
Max. Travel (fpm)[m/s]						
150-200 [0.75-1.0]	150'-0"	45720	150'-0"	45720	150'-0"	45720
250-350 [1.25-1.75]	200'-0"	60960	200'-0"	60960	200'-0"	60960
400 [2.0]	350'-0"	106680	350'-0"	106680	350'-0"	106680
450 [2.25]	425'-0"	129540	425'-0"	129540	425'-0"	129540
500 [2.5]	450'-0"	137160	450'-0"	137160	450'-0"	137160
For higher travel, please contact us.						
Pit Depth P (fpm)[m/s]						
150-350 [0.75-1.75]	5'-6"	1676	5'-6"	1676	5'-6"	1676
400 [2.0]	6'-0"	1829	6'-0"	1829	6'-0"	1829
450-500 [2.25-2.5]	6'-6"	1981	6'-6"	1981	6'-6"	1981
NOTE: For seismic conditions zone 2 and greater add to dimension (in)[mm]						
HW	4"	102	4"	102	4"	102
HD	1"	25	1"	25	1"	25

Notes:

- Designed for 8'-0" [2438] high Cab. For 9'-0" [2743] high Cab, Overhead + 1'-0" [305], for 10'-0" [3048] high Cab, Overhead + 2'-0" [610].
- When occupable space is below hoistway, counterweight safeties are required. Add 9.5" [241] to the hoistway size of counterweight location.
- Machine room size to be 12'-0" [3658] deep by, at least, the width of the required hoistway.
- Dimensional data is in accordance with ASME A17.1 and CAN/CSA B44 elevator codes.
- For duplex with rear entrance, see drawing on next page to calculate hoistway needed.

* Any size, Any capacity, Any shape... We can do it; please contact us to customize your project!

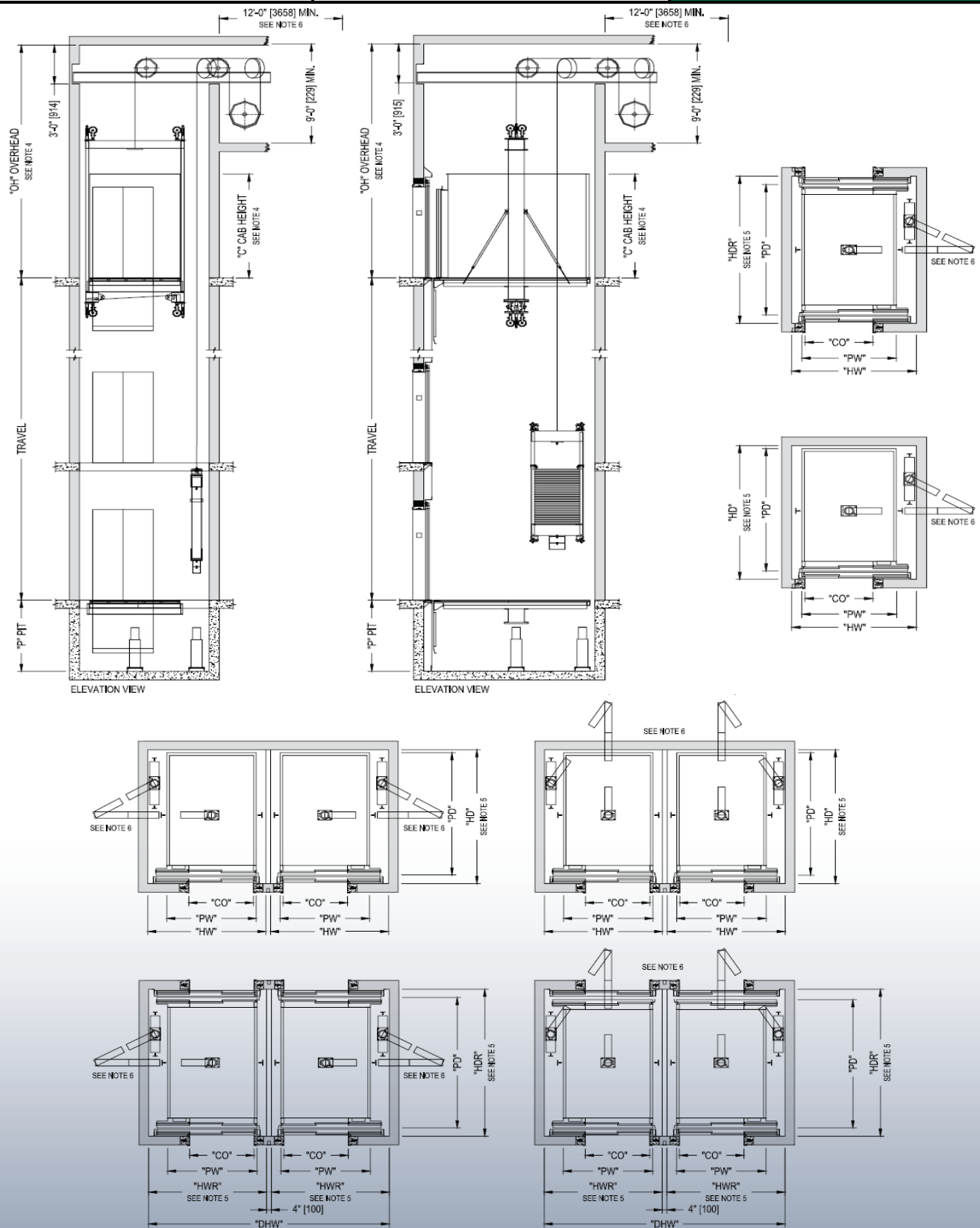
* WARNING * Do not use those dimensions for final construction purposes. Local Code or Code year application might require different spacing and will affect those dimensions. Please contact us for confirmation.

120 rue de Naples, Saint-Augustin de Desmaures, Québec, Canada, G3A 2Y2 Ph. 418.878.4116 Fax 418.878.1595

"WWW.GLOBALTARDIF.COM"

TRACTION ELEVATOR

GEARED SIDEMOUNT HOSPITAL TYPE





Groupe manufacturier d'ascenseurs



Elevator Manufacturing Group

120, rue de Naples
St-Augustin-de-Desmaures
Québec (Canada)
G3A 2Y2

Phone : 418-878-4116
Toll free : 1-800-661-6316
Fax : 418-878-1595

Sales@globaltardif.com
www.globaltardif.com

