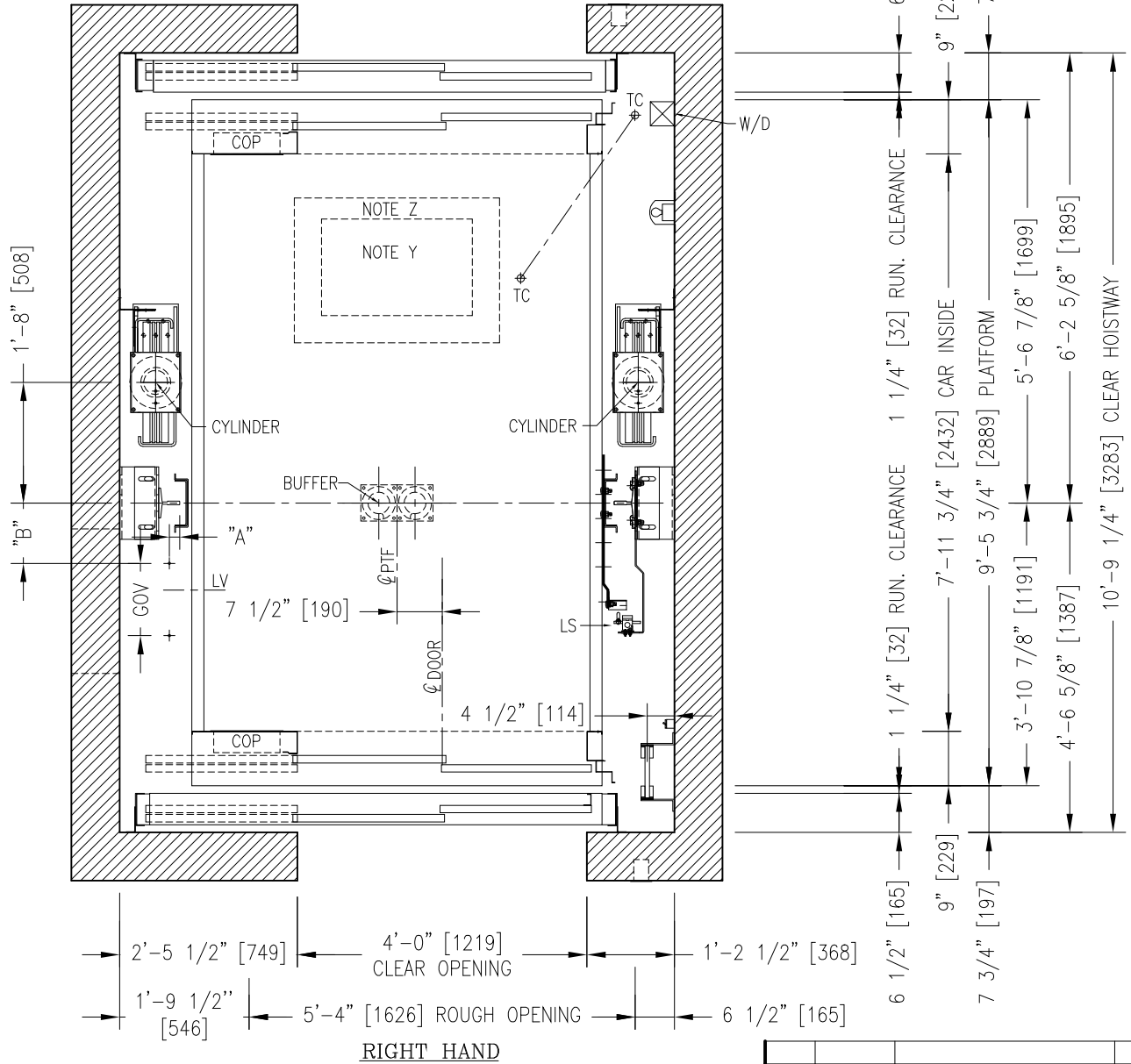


**HOISTWAY PLAN VIEW**

6" [152] → 6'-8" [2032] C/C CYLINDER → 6" [152]  
 6 1/2" [165] → 6'-7" [2007] RAIL BACK TO BACK → 6 1/2" [165]  
 10" [254] → 6'-0" [1829] DBG → 10" [254]  
 1'-0" [305] → 5'-8" [1727] PLATFORM → 1'-0" [305]  
 2" [51] → 5'-4" [1626] CAR INSIDE → 2" [51]



**RIGHT HAND**

NOTE Y: EMERGENCY EXIT 25" x 16" [635 x 406]  
 NOTE Z: REFUGE AREA 34" x 24" [864 x 609]

NOTE: \_\_\_\_\_  
 PIT: \_\_\_\_\_  
 OVERHEAD: \_\_\_\_\_

REV.:	DATE:	DESCRIPTION:	BY:
DRAWING NAME: ELEVATOR LAYOUT PLAN VIEW			
ELEVATOR(S) NUMBER:			
DETAILS: TWIN JACK ROPE 4000 LBS [1800Kg] KIT LIFT PACKAGE LS-Y2K FRONT AND REAR OPENING / TSP 48" x 84"			
PROJECT NAME:			
LOCATION:			
<small>LE GROUPE MANUFACTURIER D'ASCENSEURS</small> <b>GLOBAL TARDIF</b> <small>ELEVATOR MANUFACTURING GROUP</small>			
DRAWN BY:	VERIFIED BY:	DATE:	SCALE: N.T.S.
REF.:	DRAWING #:	SHEET:	REV: