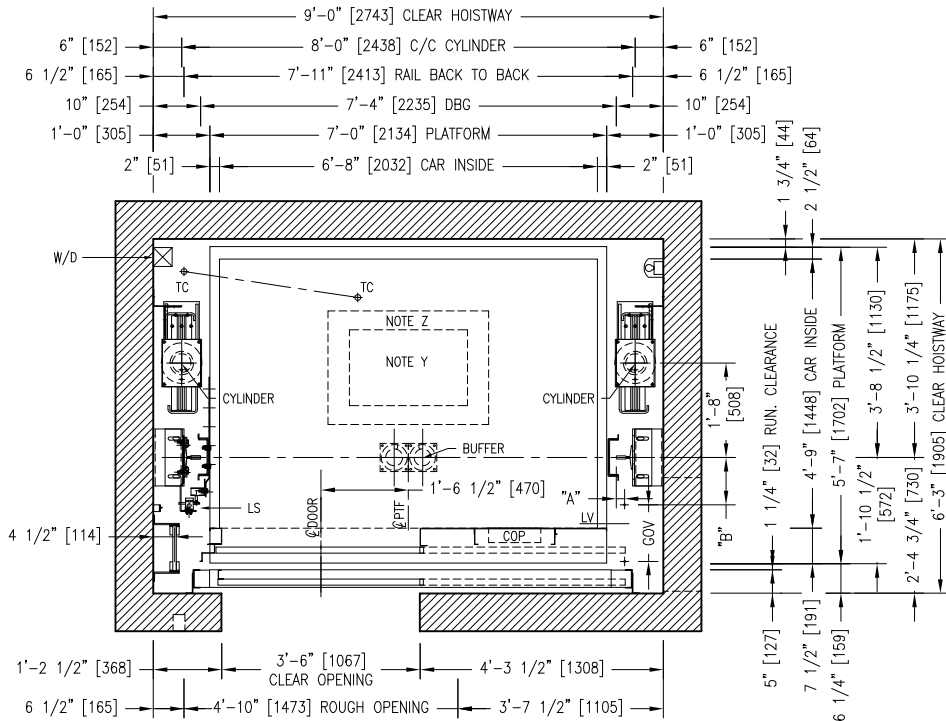


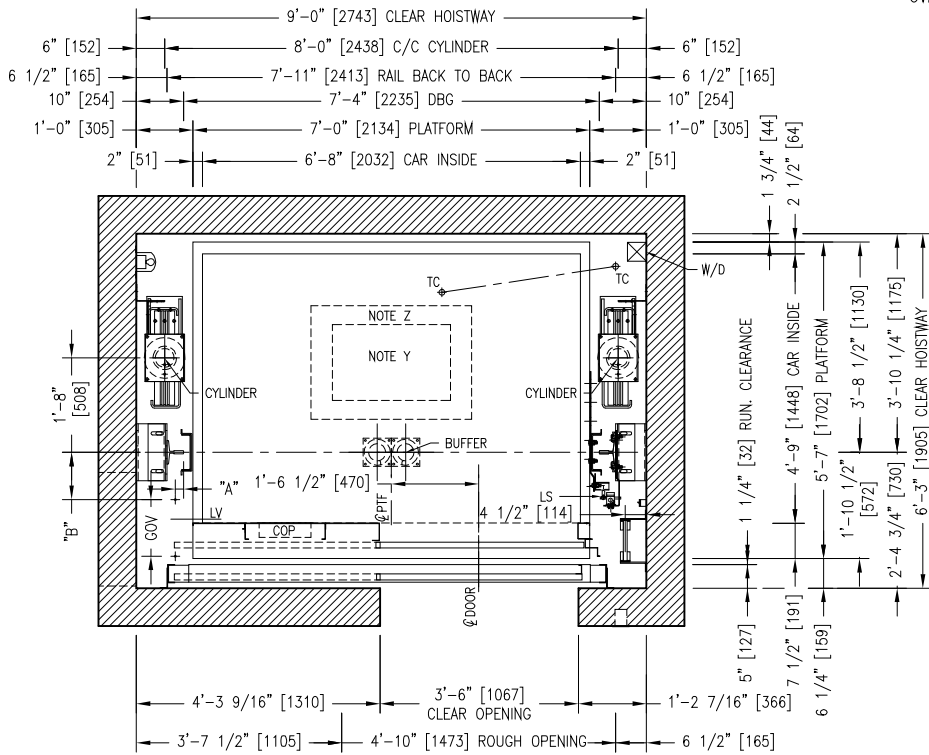
### HOISTWAY PLAN VIEW



**LEFT HAND**

NOTE Y: EMERGENCY EXIT 25" x 16" [635 x 406]  
 NOTE Z: REFUGE AREA 34" x 24" [864 x 609]

NOTE: \_\_\_\_\_  
 PIT: \_\_\_\_\_  
 OVERHEAD: \_\_\_\_\_



**RIGHT HAND**

REV.:	DATE:	DESCRIPTION:	BY:
DRAWING NAME: ELEVATOR LAYOUT PLAN VIEW			
ELEVATOR(S) NUMBER:			
DETAILS: TWIN JACK ROPE 3000 LBS [1350 Kg] KIT LIFT PACKAGE LS-Y2K FRONT OPENING / SSP 42" x 84"			
PROJECT NAME:			
LOCATION:			
LE GROUPE MANUFACTURIER D'ASCENSEURS <b>GLOBAL TARDIF</b> ELEVATOR MANUFACTURING GROUP			
DRAWN BY:	VERIFIED BY:	DATE:	SCALE: N.T.S.
REF.:	DRAWING #:	SHEET:	REV: