

## Two-Speed Center Opening doors

- Conventional (none integral) - without hangers, tracks & closers. - sold separately.  
Any size from 33" (838 mm) up to 110" (2794 mm) by 120" (3048 mm) high.

C.O.W : Clear Opening Width

D : Door width =  $C.O.W. \div 4 + 3/4"$  (19 mm) \*\*

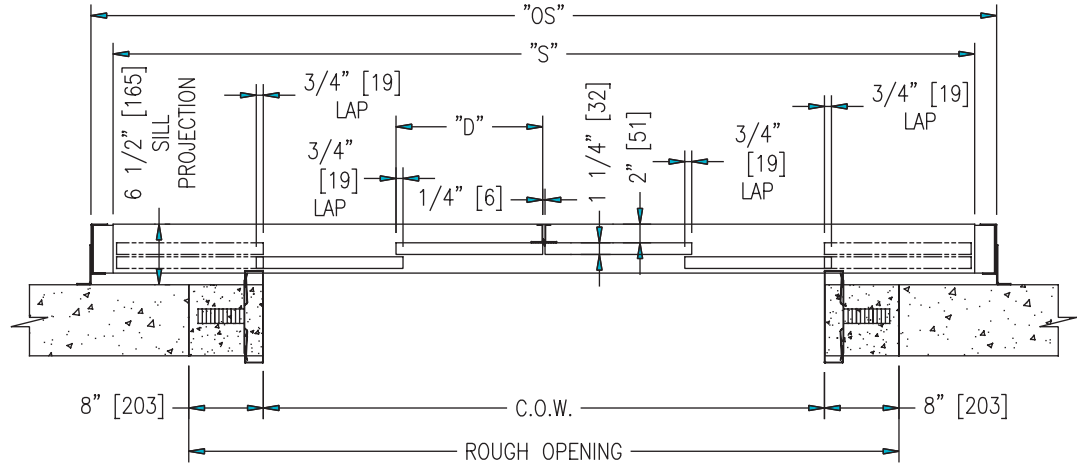
S : Sill length =  $(C.O.W. \times 1\ 1/2) + 1"$  (25 mm)

OS : Outside strut to strut =  $(C.O.W. \times 1\ 1/2) + 9"$  (229 mm)

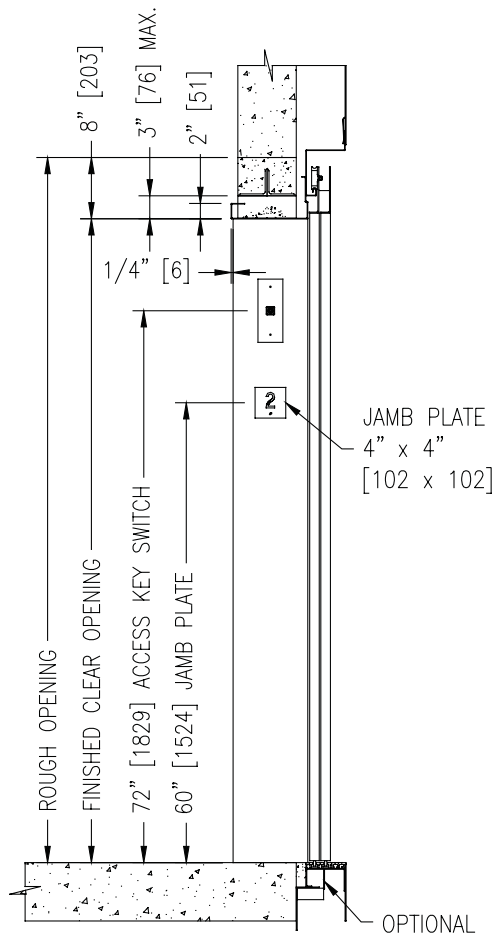
\*\* To use "D" formula, C.O.W.  $\geq 54"$

Please contact us for feasibility of a smaller "OS" dimension

Typical  
Plan  
View



Typical  
Elevation  
View



## Two-Speed Center Opening Doors

Groupe manufacturier d'ascenseurs

**GLOBAL TARDIF**



Elevator Manufacturing Group