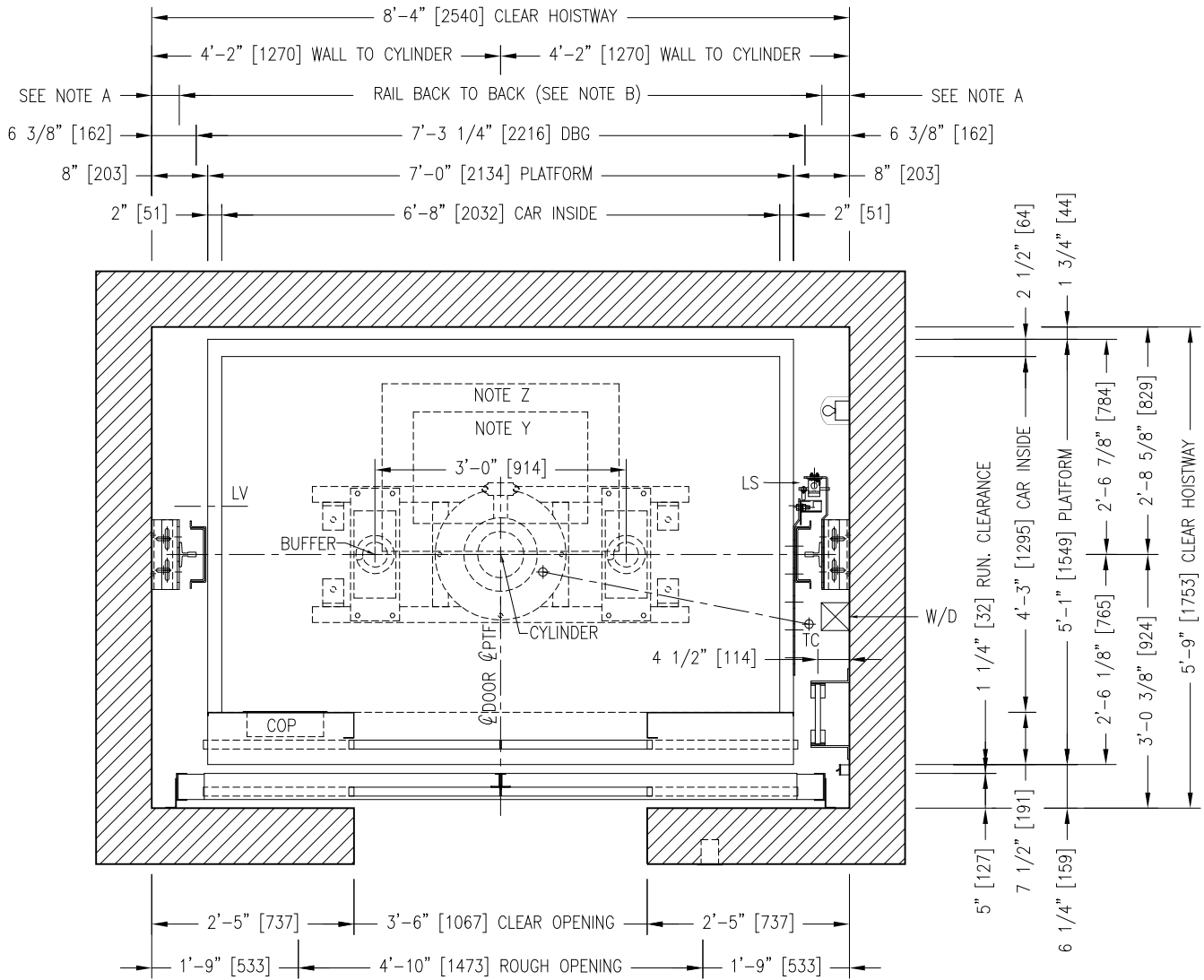


# HOISTWAY PLAN VIEW



	NOTE A	NOTE B
RAIL 8 LBS :	3 15/16"	7'-8 1/8"
RAIL 12 LBS :	2 7/8"	7'-10 1/4"

NOTE Y: EMERGENCY EXIT 25" x 16" [635 x 406]  
 NOTE Z: REFUGE AREA 34" x 24" [864 x 609]

NOTE: \_\_\_\_\_  
 \_\_\_\_\_  
 PIT: \_\_\_\_\_  
 OVERHEAD: \_\_\_\_\_

REV.:	DATE:	DESCRIPTION:	BY:
DRAWING NAME: ELEVATOR LAYOUT PLAN VIEW			
ELEVATOR(S) NUMBER:			
DETAILS: HOLED 2500 LBS [1150Kg] KIT LIFT PACKAGE LS-Y2K FRONT OPENING / CO 42" x 84"			
PROJECT NAME:			
LOCATION:			
LE GROUPE MANUFACTURIER D'ASCENSEURS <b>GLOBAL TARDIF</b> ELEVATOR MANUFACTURING GROUP			
DRAWN BY:	VERIFIED BY:	DATE:	SCALE: N.T.S.
REF.:	DRAWING #:	SHEET:	REV: