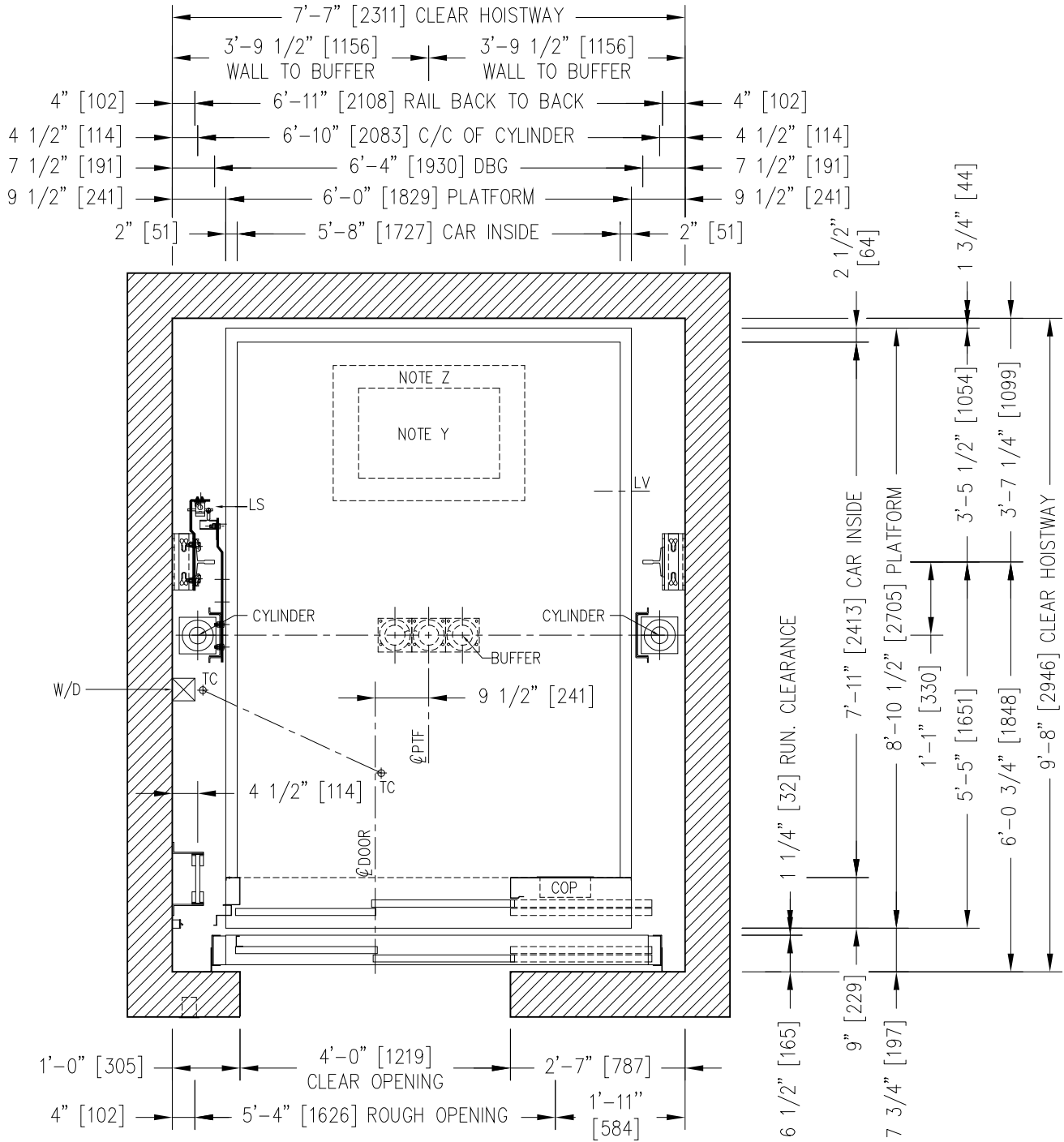


HOISTWAY PLAN VIEW



1'-0" [305] 4'-0" [1219] 2'-7" [787]
 CLEAR OPENING

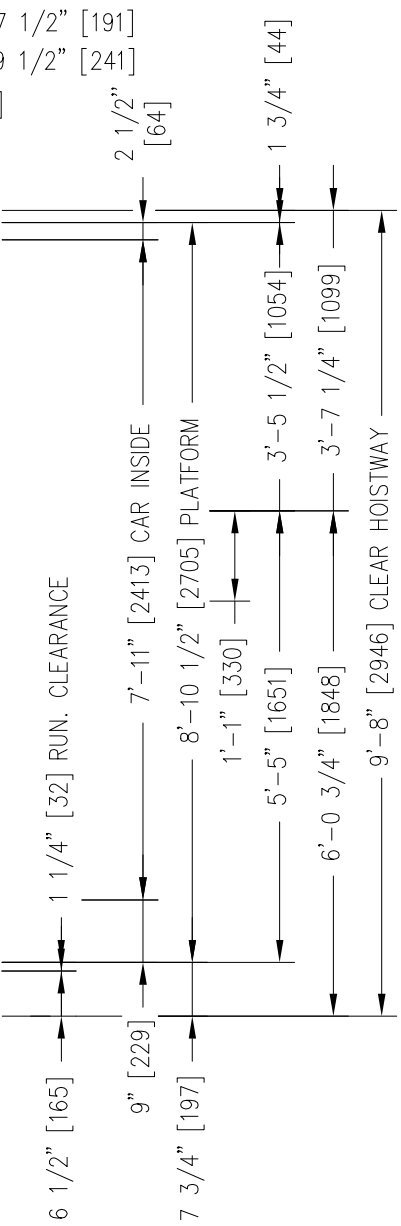
4" [102] 5'-4" [1626] 1'-11" [584]
 ROUGH OPENING

LEFT HAND

NOTE Y: EMERGENCY EXIT 25" x 16" [635 x 406]
 NOTE Z: REFUGE AREA 34" x 24" [864 x 609]

NOTE: _____

 PIT: _____
 OVERHEAD: _____



REV.:	DATE:	DESCRIPTION:	BY:
DRAWING NAME: ELEVATOR LAYOUT PLAN VIEW			
ELEVATOR(S) NUMBER:			
DETAILS: TWIN JACK DIRECT 4500 LBS [2000Kg] KIT LIFT PACKAGE LS-Y2K FRONT OPENING / TSP 48" x 84"			
PROJECT NAME:			
LOCATION:			
LE GROUPE MANUFACTURIER D'ASCENSEURS GLOBAL TARDIF ELEVATOR MANUFACTURING GROUP			
DRAWN BY:	VERIFIED BY:	DATE:	SCALE: N.T.S.
REF.:	DRAWING #:	SHEET:	REV: